

Catalogue of the Contemporary Portraits of Alfred Russel Wallace

George Beccaloni



First edition



INTRODUCTION

This catalogue documents all known portraits (photographic and in other media) of the British naturalist Alfred Russel Wallace (ARW) (1823-1913), made from life. All notable contemporary variants that I know of have been included for comparison. Drawings or paintings which were based on these portraits are excluded, but many of them can be seen in Chua (2020). In a few cases it was unclear whether a portrait was made from life or not, so I erred on the side of caution and included it. An exception to the 'from life' rule was made for three woodcut illustrations from ARW's 1869 book *The Malay Archipelago*, since ARW commissioned these and would have ensured they were accurate depictions of him in the field.

A total of 95 different life portraits of ARW are known (92 excluding the woodcuts): 84 photographs, 2 paintings, 3 woodcuts, 4 drawings and 2 low relief sculptures. He was only photographed six times prior to his departure for the 'Malay Archipelago' in 1854, aged 31, because photography was in its infancy and he did not have much money. However, towards the end of his life he was photographed more frequently, because he was then world famous and also because photography was at that point much cheaper and easier to do. ARW's brother-in-law Thomas Sims (1826-1910) was a professional photographer and all of the early photographs are probably by him (with one possible exception), as are a number of the later ones. Other photographers include the well-known firms of Maull & Fox and Elliott & Fry, and the famous photographer Emil Otto Hoppé (1878-1972). It is worth noting that ARW always wore the parting in his hair on the left-hand side of his head - so portraits showing his parting on his right side are mirror images (laterally inverted).

Sadly, no photograph exists which shows the co-discoverers of evolution by natural selection (ARW and Charles Darwin) together, despite the best attempts of German zoologist Adolf Bernhard Meyer (1840-1911). Meyer wrote to Darwin in 1869 about a German translation he was preparing of Darwin and ARW's 1858 'joint paper' in which their theories of natural selection were first published. He wanted photographs of both men for publication in it and wrote "...perhaps you will not object to have your photograph taken with Mr Wallace in *one* picture, and if this idea meets your approval you might perhaps carry it out when you go to London at Christmas time or earlier if *possible*."¹ Sadly for us Darwin declined the request, replying "...I am not willing to sit on purpose; it is what I hate doing & wastes a whole day owing to my weak health; and to sit with another person would cause still more trouble & delay"² ARW, received the same request from Meyer, and perhaps sensing that it would be awkward and difficult for Darwin, he wrote to Darwin saying "It is of course out of the question our meeting to be photographed together, as Mr. Meyer coolly proposes."³ In the end Meyer's translation was published without photographs of the two men.

A number of the portraits included in this catalogue were never published during ARW's lifetime and often only one or two original examples seem to have survived. This is even the case for many of his carte de visites, despite the fact that he must have sent copies of them to many friends and admirers. We owe the preservation of many of the surviving portraits to his family. His son William and daughter Violet donated fifteen photographs and one painting to London's National Portrait Gallery after ARW's death. Other photographs remained in the family until recently, when a number were purchased by or were donated to the Natural History Museum, London. Some unique original photographs are still owned by ARW's descendants. It is likely that a few additional portraits remain to be discovered in archives, private collections and in publications about ARW.

Citing this catalogue

This catalogue supersedes three draft pdf versions entitled *Portraits of Alfred Russel Wallace*, versions 1 (2016), 2 (2018) and 3 (2020), which were made publicly available on The Alfred Russel Wallace Website (<https://wallacefund.myspecies.info/>). It may be cited as follows:

Beccaloni, G. W. 2022. *Catalogue of the Contemporary Portraits of Alfred Russel Wallace*. 1st edition. UK: A. R. Wallace Memorial Fund. 50 pp. <[DOI:10.5281/zenodo.6406373](https://doi.org/10.5281/zenodo.6406373)>

ENDNOTES

1. Adolf Bernhard Meyer to Charles Darwin, 24 November 1869. Darwin Correspondence Project, "Letter no. 7008," accessed on 4 December 2016, <<http://www.darwinproject.ac.uk/DCP-LETT-7008>>
2. Charles Darwin to Adolf Bernhard Meyer, 27 November [1869]. Darwin Correspondence Project, "Letter no. 7014," accessed on 4 December 2016, <<http://www.darwinproject.ac.uk/DCP-LETT-7014>>
3. Wallace, Alfred Russel. 1869. [WCP1927: Letter to Charles Darwin, dated 4 December [1869]]. In: Beccaloni, G. W. (Ed.). 2021. *Epsilon: The Alfred Russel Wallace Collection*. WWW electronic publication. <<https://epsilon.ac.uk/view/wallace/letters/WCP1927>>

ACKNOWLEDGEMENTS

I am extremely grateful to ARW's late grandsons Richard and John Wallace for allowing me to photograph or scan portraits in their possession. I am also very grateful to Charles Smith for his considerable help in locating published portraits and to James Moore for supplying biographical information about some of ARW's photographers.

I would also like to thank the Barking and District Historical Society, English Heritage, the E. O. Hoppé Estate, the National Portrait Gallery, London, the Linnean Society of London, the Natural History Museum, London, Oxford University Museum, the Royal Collection Trust, the Royal Entomological Society, Charles Smith and Fred Langford Edwards for allowing me to reproduce digital images of portraits which they own the reproduction rights to. Many thanks also to Matt Beros, Katrina van Grouw and Vinnie O'Connell for discovering three portraits I had missed from the draft versions of this catalogue.

THE CATALOGUE

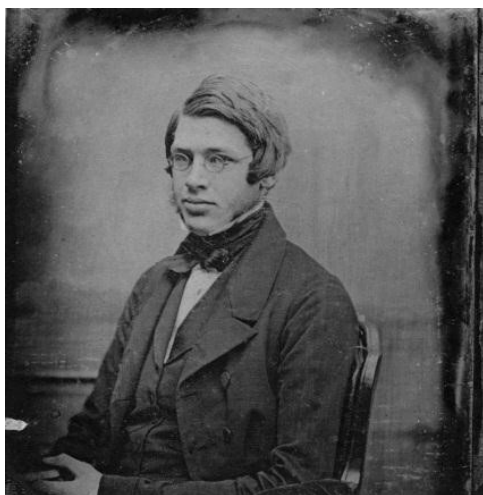
The portraits in this catalogue are arranged chronologically, but it is likely that mistakes have been made in placing them into this sequence since many of them were originally undated and even after considerable research the dates of some could only be guessed at. All portraits have been given a unique "WP" (Wallace Portrait) code (e.g., WP56) to identify them and enable them to be easily referenced. Where variants of a portrait are present, they have been sequentially numbered and the number added to the end of the portrait code preceded by a "." (e.g., WP15.2).

Dimensions are given as width x height and are measurements taken from the original item - usually the original photographic print, minus any border or mount, unless stated otherwise. Note that the backgrounds of a few images were slightly cropped to maximise the size of the portraits of ARW (the portraits themselves were never cropped), and that some damaged portraits have been restored. The primary aim has been to document the portraits, not the physical objects themselves.

Images marked ★ can be supplied by the A. R. Wallace Memorial Fund/George Beccaloni for reproduction in publications (see <https://wallacefund.myspecies.info/reproducing-images>). Most of the master versions of these are high resolution (30MB+) and many have been painstakingly restored to remove scratches and other damage. Images of many of them (plus many other photographs relating to ARW) can be seen on the A. R. Wallace Memorial Fund's Flickr site (<https://tinyurl.com/ye5owxdl>).

WP1.1

ARW in 1847, aged 24.



Photographer: unknown, but possibly Thomas Sims or a photographer in Paris.

Scan of a platinotype copy of a daguerreotype, measuring 78 mm x 79 mm. It was donated to the National Portrait Gallery by ARW's children, William and Violet in 1916 (Photographs Collection. NPG x5108). The original daguerreotype does not appear to have survived. Note that the image is laterally inverted, as is the case with the majority of daguerreotypes.

This is the earliest known portrait of ARW. In the first edition of his autobiography *My Life* (1905) he says this image was from a daguerreotype taken in 1848. However, in the second (1908) edition of his book this portrait is captioned "AGED 24", which would date it to 1847. ARW is known to have travelled to Paris with his sister Fanny and brother John in September 1847 and to have purchased a daguerreotype camera there which aspiring photographer Thomas Sims used for many years. ARW does not name the photographer of this portrait. It may have been Sims, but ARW would probably have credited him as he did in the case of several other portraits taken by him. One other possibility is that the photograph was taken by an unnamed photographer in Paris.

First published in ARW's autobiography *My Life* (1905).

Copyright of digital image: National Portrait Gallery, London. Licensed under Creative Commons Attribution-NonCommercial-NoDerivs 3.0-Unported (<http://creativecommons.org/licenses/by-nc-nd/3.0/>)

WP1.2

ARW in 1847, aged 24.

Same as the preceding photograph, but with the background edited out.

Scanned from ARW's autobiography *My Life* (1905).

Copyright of digital image: A. R. Wallace Memorial Fund & G. W. Beccaloni. ★

WP2

ARW in 1853, aged 30.

Photographer: Thomas Sims.

The original was almost certainly an ambrotype, which does not seem to have survived.

First published in ARW's autobiography *My Life* (1905) and scanned from that publication.

Copyright of digital image: A. R. Wallace Memorial Fund & G. W. Beccaloni. ★

WP3

ARW in 1853*, with his mother and sister Fanny.

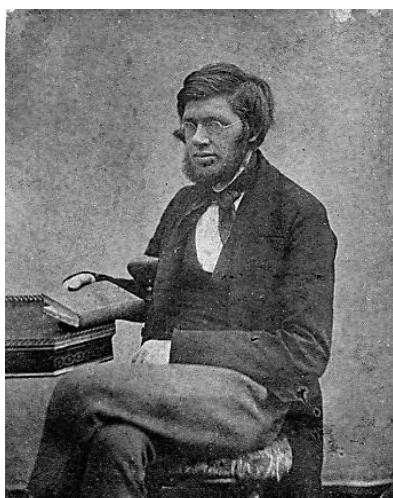
Photographer: Thomas Sims*.

Scan of a photographic print on thin matt paper, measuring 97 mm x 134 mm, which is owned by the Wallace family. The original was almost certainly an ambrotype.

Copyright of digital image: A. R. Wallace Memorial Fund & G. W. Beccaloni. ★

*See letter from John Wallace to ARW dated 10 October 1853 ([WCP1294](#)).

WP4

**ARW, probably in 1853.**

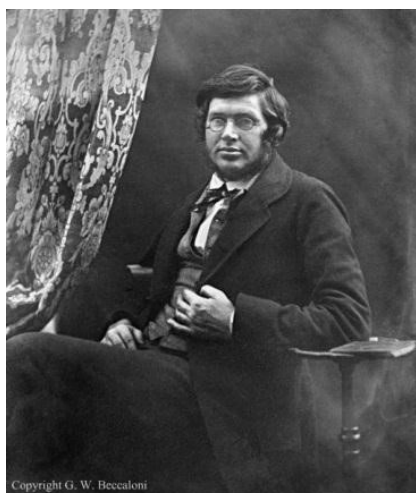
Photographer: probably Thomas Sims.

A calotype print measuring 112 mm x 143 mm. It was donated to the National Portrait Gallery by William and Violet Wallace in 1916 (Photographs Collection NPG x5109).

The National Portrait Gallery states that this photo was taken 1847-1849, but it is more likely dated 1853.

Copyright of digital image: National Portrait Gallery, London. Licensed under Creative Commons Attribution-NonCommercial-NoDerivs 3.0-Unported (<http://creativecommons.org/licenses/by-nc-nd/3.0/>)

WP5

**ARW, probably in 1853.**

Photographer: probably Thomas Sims.

Photograph of an ambrotype owned by the Wallace family.

Copyright of digital image: G. W. Beccaloni. ★

WP6

**ARW, probably in 1853, playing chess with his sister Fanny.**

Photographer: probably Thomas Sims.

Photograph of an ambrotype owned by the Wallace family.

Copyright of digital image: G. W. Beccaloni. ★

WP7.1

ARW in first half of 1857.



Artist: Thomas Baines.

Woodcut illustration based on an original sketch by ARW now preserved in the London Natural History Museum's Wallace Archive.

The illustration shows Dobbo, a trading settlement on Wamar, Aru Islands (Indonesia), where ARW in 1857. ARW is shown in the centre (see enlargement). ARW's original sketch (which survives) does not show any people.

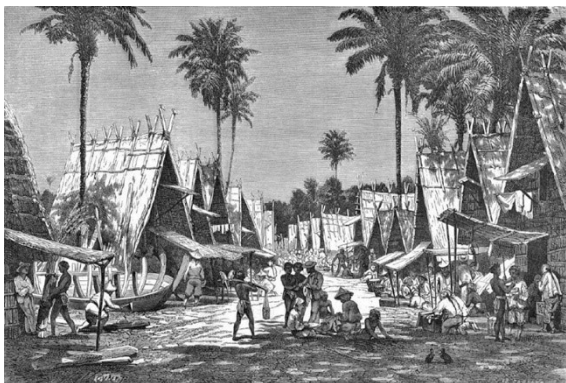
Published in Wallace (1869), volume 2, facing p. 267.

Copyright of digital image: Public domain.



WP7.2

ARW in first half of 1857.



Artist: Jean-Pierre Moynet.

Woodcut illustration based on the preceding image.

Like the preceding illustration, ARW is in the centre (see enlargement), but he is facing the opposite way.

Published in Wallace (1873), p. 185.

Copyright of digital image: G. W. Beccaloni. ★



WP8.1

ARW in late 1857.



Artist: Thomas Baines.

Woodcut illustration showing a local person extracting a large python from ARW's hut on Ambon Island, Indonesia. ARW is shown to the right holding a gun (see enlargement).

Published in Wallace (1869), volume 1, facing p. 467.

Copyright of digital image: Public domain.



WP8.2

ARW in late 1857.



Artist: Frédéric Sorrieu.

Woodcut illustration based on the preceding illustration.

Published in Wallace (1872), p. 249.

Copyright of digital image: G. W. Beccaloni. ★



WP9

ARW in 1860.

Artist: Thomas Baines.

Woodcut illustration based on a sketch by ARW which has not survived.

ARW lived in this tiny native hut in Besir, Gam Island (Indonesia) for six weeks in late 1860. The barely discernible figure under the hut is ARW sitting in a wicker chair and working at a table.

Published in Wallace (1869), volume 2, p. 360.

Copyright of digital image: Public domain.

WP10.1

ARW in February 1862, aged 39, with his friend Frederick F. Geach, in Singapore.

Photographer: unknown.

Scan of a photographic print on thin paper measuring 104 mm x 148 mm, which has been pasted onto a sheet of thicker paper. When scanned it was owned by the Wallace family, but it has since been donated to the Natural History Museum, London. A "bromide copy print" of this item is owned by the National Portrait Gallery (Photographs Collection NPG x5110).

This is the only known photograph of ARW taken while he was in the Malay Archipelago. The annotations below the image are in ink in ARW's hand. All other versions of this image are copies of this print.

Copyright of digital image: A. R. Wallace Memorial Fund & G. W. Beccaloni. ★

WP10.2

ARW in February 1862, aged 39, in Singapore.

Same as the preceding photograph but with Geach painted out.

First published in Marchant (1916) and scanned from that publication.

Copyright of digital image: A. R. Wallace Memorial Fund & G. W. Beccaloni. ★

WP11

ARW in c. 1862.

Photographer: Sims Brothers, 23 Westbourne Grove, London. Thomas Sims and his brother Edward had a studio at this address from 1861 to 1863.

Scan of an original hand-coloured carte de visite owned by the Wallace family. Dimensions of the photographic print are 55 mm x 90 mm.

All other versions of this image (e.g., the image published in Marchant (1916)) are copies of this original, since blemishes unique to this carte are present in these later versions. There is an old black & white second generation copy of this photograph in the London Natural History Museum's Wallace Archive.

First published in Marchant (1916).

Copyright of digital image: A. R. Wallace Memorial Fund & G. W. Beccaloni. ★

WP12

ARW in c. 1863.

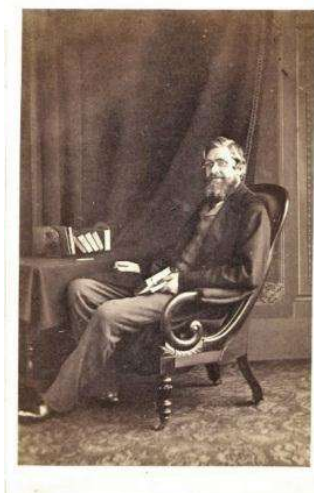
Photographer: Sims Brothers, 23 Westbourne Grove, London. Thomas Sims and his brother Edward had a studio at this address from 1861 to 1863.

Scan of an original carte de visite owned by the Wallace family. Dimensions of the photographic print are 58 mm x 89 mm.

First published on the Wallace Memorial Fund website in March 2010.

Copyright of digital image and owner of Publication Right: A. R. Wallace Memorial Fund & G. W. Beccaloni. ★

WP13

ARW in c. 1863.

Photographer: Sims Brothers, 23 Westbourne Grove, London. Taken at the same sitting as the preceding photo.

Scan of the photograph on a carte de visite owned by the Royal Entomological Society, UK.

Copyright of digital image: Royal Entomological Society, UK.

WP14



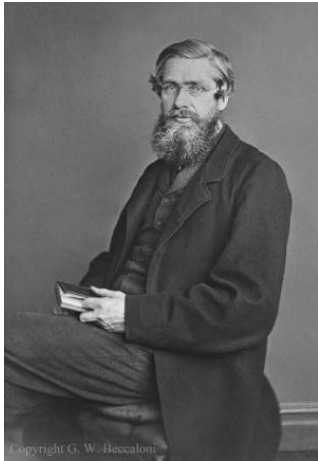
ARW, probably in 1868, with his son Bertie (Herbert Spencer, b. 22 June 1867, d. 24 April 1874).

Photographer: Albert Eugene Fradelle, Portland Bazaar, Langham Place, Regent Street, London. Fradelle worked at this address until 1868.

Scan of a carte de visite owned by the Wallace family. Dimensions of the photographic print are 58 mm x 88 mm.

Copyright of digital image: A. R. Wallace Memorial Fund & G. W. Beccaloni. ★

WP15.1



ARW in 1869.

Photographer: Thomas Sims.

Photograph of an original ambrotype whole plate image on glass, measuring 164 mm x 212 mm. It is owned by the Wallace family. A handwritten inscription in white at the top of the plate reads "M^r Wallace".

In his autobiography *My Life* (1905) ARW says that this photo was taken in 1869 *i.e.* when he was aged 45, or more likely 46, and living in Regent's Park, London. His son William incorrectly thought it was taken between 1863 and 1866 (see <http://wallacefund.info/national-portrait-gallery-portraits>).

First published in ARW's autobiography *My Life* (1905).

Copyright of digital image: G. W. Beccaloni. ★

WP15.2



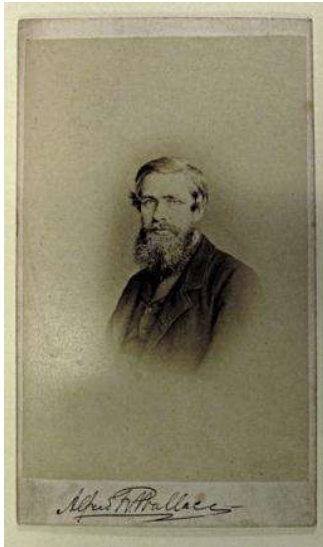
ARW in 1869.

Same as the preceding photograph.

Photograph of a carte de visite owned by the Wallace family. Dimensions of the photographic print are 58 mm x 93 mm. Printed text on verso reads "T. Sims & Co...76 Westbourne Grove[,] W". Thomas Sims and his brother Edward had a studio at this address from 1864/5 to 1869.

Copyright of digital image: A. R. Wallace Memorial Fund & G. W. Beccaloni. ★

WP15.3

ARW in 1869.

Same as the preceding photograph.

Photograph of an original carte de visite signed in ink under the photograph by ARW. It is owned by the Wallace family.

Copyright of digital image: G. W. Beccaloni.

WP15.4

ARW in 1869.

Same as the preceding photograph.

Scan of a photographic print on very thin slightly glossy paper, owned by the Wallace family. Dimensions of the print are 69 mm x 111 mm.

Copyright of digital image: A. R. Wallace Memorial Fund & G. W. Beccaloni. ★

WP15.5

ARW in 1869.

A laterally inverted version of the preceding photograph.

Scan of a photographic print measuring 89 mm x 138 mm, which is owned by the Wallace family. It was probably produced as part of the process of preparing this portrait for publication in ARW's autobiography *My Life*. A pencil annotation on the verso reads "Make background lighter".

Copyright of digital image: A. R. Wallace Memorial Fund & G. W. Beccaloni. ★

WP15.6

ARW in 1869.



Same as the preceding photograph, but inverted the correct way and cropped.

Scan of a photographic print measuring 74 mm x 113 mm, which is owned by the Wallace family. This is probably the final version of the portrait of ARW published in UK editions of his autobiography *My Life*.

Curiously, in the first American edition of *My Life* (published in 1905 by Dodd, Mead & Co. in 2 volumes) this image is laterally inverted.

Copyright of digital image: A. R. Wallace Memorial Fund & G. W. Beccaloni. ★

WP15.7

ARW in 1869.



Artist: unknown.

Painted in oils over a copy of the preceding photograph. The original photograph lacks the objects shown in the background of the painting. Dimensions of the painting are 225 mm x 289 mm. It was donated to the National Portrait Gallery by William and Violet Wallace in 1916 (Primary Collection NPG 1765).

Copyright of digital image: National Portrait Gallery, London. Licensed under Creative Commons Attribution-NonCommercial-NoDerivs 3.0-Unported (<http://creativecommons.org/licenses/by-nc-nd/3.0/>)

WP15.8

ARW in 1869.

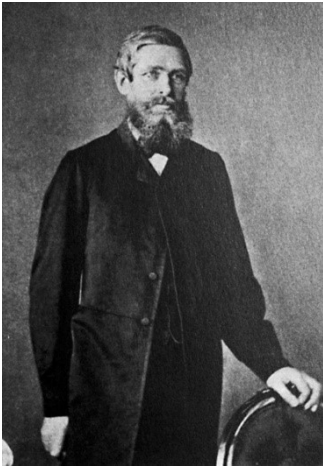


Photograph of the preceding oil painting.

Scan of a mounted photographic print owned by the Wallace family. Dimensions of the whole object (not all of which is shown here) are 101 mm x 124 mm.

Copyright of digital image: A. R. Wallace Memorial Fund & G. W. Beccaloni. ★

WP16

ARW in the late 1860s.

Photographer: unknown (possibly Thomas Sims).

Copyright of digital image: Found on Internet. Public Domain?

WP17

ARW in 1871-1873.

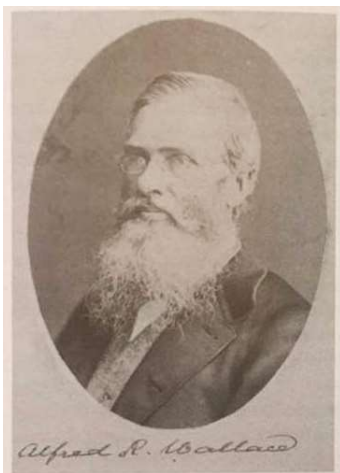
Photographer: Sawyer & Bird, 87 Regent Street, London. The firm operated under this name from 1871 to 1873.

An original carte de visite owned by the Wallace family. Dimensions of the photographic image are 93 mm x 60 mm.

First published on the Wallace Memorial Fund website in March 2010.

Copyright of digital image and owner of Publication Right: A. R. Wallace Memorial Fund & G. W. Beccaloni. ★

WP18

ARW in 1871-1873.

Photographer: Sawyer & Bird, London. Taken at the same sitting as the preceding photograph.

Scan of a photograph glued to a sheet of paper along with three photographic portraits of other people. ARW's name is written below the portrait in Henry Eeles Dresser's hand. Dimensions of the photographic image are 51 mm x 70 mm. This item is in the H. E. Dresser correspondence in the library of the University of Manchester, UK (English MS 1404).

Copyright of digital image: University of Manchester, UK

WP19

ARW on 14 March 1874, with the "spirit of his mother".



Photographer: Frederick A. Hudson.

Scan of an original carte de visite owned by the Wallace Family. Dimensions of the whole carte are 63 mm x 105 mm.

Taken at Hudson's with Mrs Guppy present as a medium. This is one of three spirit photographs taken on that occasion, only two of which seem to have survived.

Copyright of digital image: A. R. Wallace Memorial Fund & G. W. Beccaloni. ★

WP20

ARW on 14 March 1874, with a spirit apparition.



Photographer: Frederick A. Hudson.

Scan of a carte de visite owned by the College of Psychic Studies, Queensberry Place, London, SW7.

Taken at Hudson's with Mrs Guppy present as a medium. This is one of three spirit photographs taken on that occasion, only two of which seem to have survived.

Copyright of digital image: College of Psychic Studies.

WP21

ARW in 1877.

Photographer: William Usherwood, Dorking, Surrey.

Scan of a carte de visite owned by the Wallace family. Dimensions of the photographic image are 55 mm x 93 mm.

Copyright of digital image: A. R. Wallace Memorial Fund & G. W. Beccaloni. ★

WP22.1

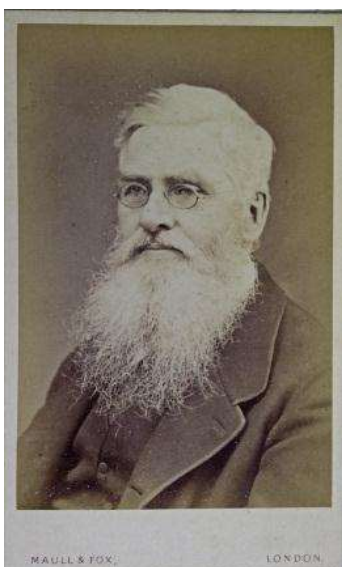
ARW on 14 September 1878, aged 55.

Photographer: Maull & Fox, 187^A Piccadilly and 62 Cheapside, London.

Scan of a carte de visite owned by the Wallace family. Dimensions of the photographic image are 100 mm x 145 mm. A handwritten annotation on the verso reads "Sep 14. 1878".

Copyright of digital image: A. R. Wallace Memorial Fund & G. W. Beccaloni. ★

WP22.2

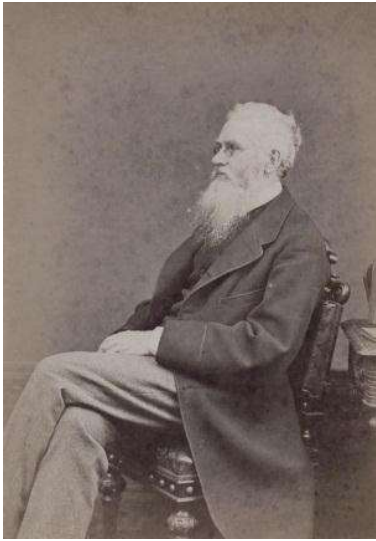
ARW on 14 September 1878, aged 55.

Same as the preceding photograph.

Scan of a carte de visite owned by the Wallace family. Dimensions of the carte are 63 mm x 104 mm. Printed text on the verso reads "187^A PICCADILLY AND 62 CHEAPSIDE[,] LONDON".

Copyright of digital image: A. R. Wallace Memorial Fund & G. W. Beccaloni. ★

WP23.1

ARW on 14 September 1878, aged 55.

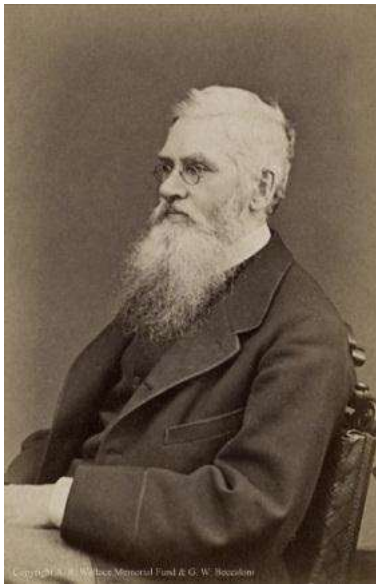
Photographer: Maull & Fox, London. Taken at the same sitting as the preceding photograph.

An albumen print measuring 101 mm x 144 mm. It was donated to the National Portrait Gallery by William and Violet Wallace in 1916 (Photographs Collection NPG x5111).

Possibly first published in *The English Illustrated Magazine*, **30**. n.s. (Jan. 1904), p. 421.

Copyright of digital image: National Portrait Gallery, London. Licensed under Creative Commons Attribution-NonCommercial-NoDerivs 3.0-Unported (<http://creativecommons.org/licenses/by-nc-nd/3.0/>)

WP23.2

ARW on 14th September 1878, aged 55.

Same as the preceding photograph.

Scan of a carte de visite owned by the Wallace family. Dimensions of the photographic image are 58 mm x 89 mm. Printed text on the verso reads "MAULL & FOX... 187^A PICCADILLY AND 62 CHEAPSIDE[,] LONDON".

Copyright of digital image: A. R. Wallace Memorial Fund & G. W. Beccaloni. ★

WP24

**ARW on 29 June 1882, aged 59, dressed in his Dublin University LL.D. robes.**

Photographer: George Mansfield, 90 Grafton Street, Dublin, Ireland.

Scan of a carte de visite owned by the Wallace family. Dimensions of the photographic image are 58 mm x 95 mm.

ARW was awarded two honorary doctorates - one from Dublin University on 29 June 1882, and another from Oxford University in 1889. In a letter to his brother-in-law Charles Algernon Wilson dated 24 December 1882 ([WCP4801](#)) he said "Last summer the Dublin University offered me the degree of L.L.D., which I did not like to refuse although I am utterly indifferent to all such so-called honors. I send you a carte taken directly after the ceremony, the gown being scarlet cloth faced with light lilac pink silk...".

First published on the Wallace Memorial Fund website in March 2010.

Copyright of digital image and owner of Publication Right: A. R. Wallace Memorial Fund & G. W. Beccaloni. ★

WP25.1

**ARW on 6 June 1887, aged 64.**

Photographer: Studio of Isaiah West Taber, San Francisco.

This is the only known photograph of ARW taken whilst he was on his North American lecture tour of 1886-1887.

First published in the 18 June 1887 issue of *Mining and Scientific Press*, p. 397, and scanned from that publication.

Copyright of digital image: Charles H. Smith.

WP25.2

ARW on 6 June 1887, aged 64.

Same as the preceding photograph.

Scan of a carte de visite in a private collection. An albumen print of this image, measuring 123 mm x 195 mm, was donated by William and Violet Wallace in 1916 to the National Portrait Gallery (Photographs Collection NPG x5112).

I suspect that this carte de visite version was produced for sale to the public. The printed signature below the image to the left does not look like it is by ARW. An example in a private collection is signed in ink by ARW on the verso. A copy in the John Muir Papers, Holt-Atherton Special Collections, University of the Pacific Library, was presented by ARW to John Muir and is inscribed by ARW on the verso.

Copyright of digital image: Public domain.

WP26.1

ARW in 1889.

Photographer: Thomas Sims, 70 Lillie Road, West Brompton, London. Wellcome Images says this photo was taken in 1889. Thomas Sims had a studio at this address from 1887 to 1896.

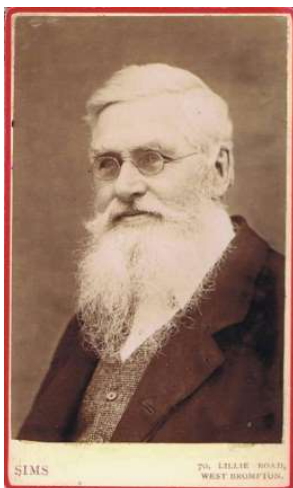
Photograph of an original cabinet card in the London Natural History Museum's Wallace Archive. It is signed in ink by ARW below the photograph.

An albumen print of this photograph, measuring 57 mm x 89 mm, was donated in 1916 by William and Violet Wallace to the National Portrait Gallery (Photographs Collection NPG x5113).

First published (as a mirror image) in ARW's book *Darwinism* (1889).

Copyright of digital image: Natural History Museum, London & Fred Langford Edwards.

WP26.2

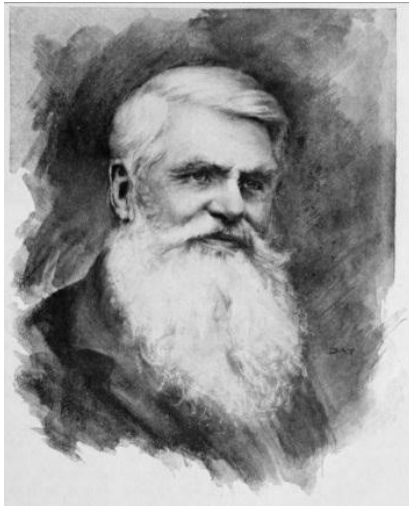
ARW in 1889.

Same as the preceding photograph.

Carte de visite format.

Copyright of digital image: Public domain.

WP27

ARW, probably in 1889.

Artist: unknown.

This painting is a mirror image. It is unusual as ARW is not wearing glasses (but see below for a number of photographs of him without his glasses). When laterally inverted this picture is very similar to the above photograph. It may be an artistic interpretation of the above, it could have been based on an unknown photograph, or it may possibly be an original artwork produced in the same time period as the photograph above.

Illustration from *Harper's New Monthly Magazine*, **95** (Nov. 1897), p. 937.

Copyright of digital image: Public domain.

WP28

ARW, probably in the late 1880s, in a conservatory/greenhouse.

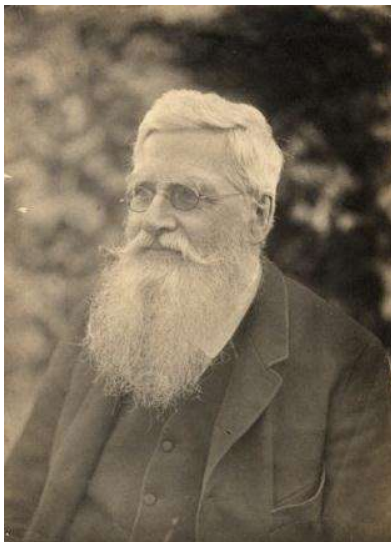
Photographer: unknown.

Scan of a photographic print owned by the Wallace family. Dimensions of the photographic image are 115 mm x 157 mm.

First published on the Wallace Memorial Fund website in March 2010.

Copyright of digital image and owner of Publication Right: A. R. Wallace Memorial Fund & G. W. Beccaloni. ★

WP29

ARW, probably in late 1880s.

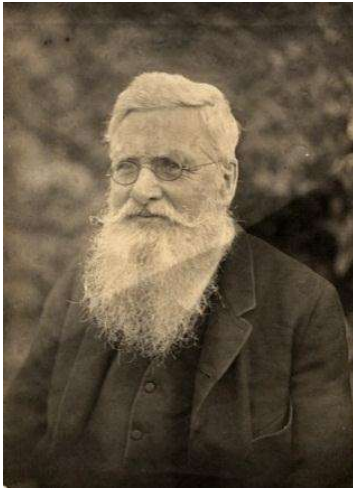
Photographer: unknown.

Scan of a photographic print owned by the Wallace family. Dimensions of the photographic image are 152 mm x 206 mm.

First published on the Wallace Memorial Fund website in 2010.

Copyright of digital image and owner of Publication Right: A. R. Wallace Memorial Fund & G. W. Beccaloni. ★

WP30

ARW, probably in late 1880s.

Photographer: unknown. Taken at the same sitting as the photograph above.

Scan of a photographic print owned by the Wallace family. Dimensions of the photographic image are 154 mm x 213 mm.

First published on the Wallace Memorial Fund website in 2010.

Copyright of digital image and owner of Publication Right: A. R. Wallace Memorial Fund & G. W. Beccaloni. ★

WP31.1

ARW in 1895.

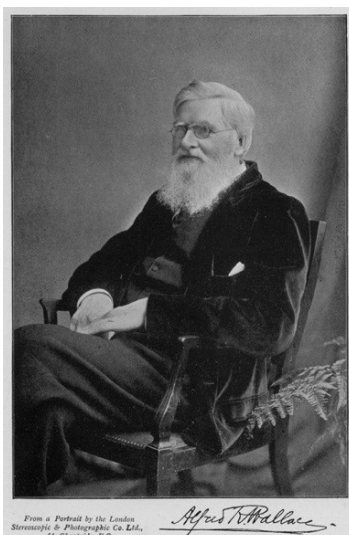
Photographer: London Stereoscopic & Photographic Co. Ltd., 54 Cheapside and 106 & 108 Regent Street, London.

Scan of a cabinet card owned by the Wallace family. Dimensions of the card are 107 mm x 166 mm.

First published in the *Labour Annual: a Year Book of Social, Economic and Political Reform* (1896) as the frontispiece.

Copyright of digital image: A. R. Wallace Memorial Fund & G. W. Beccaloni. ★

WP31.2

ARW in 1895.

Same as preceding photograph.

Scan of a single sided printed sheet. Printed text below the portrait reads "From a Portrait by the London Stereoscopic & Photographic Co. Ltd., 54, Cheapside, E.C.". The signature of ARW is printed.

This item was enclosed in a letter from Mary Evans to ARW's wife Annie, dated 27 December 1913 ([WCP5388](#)).

Copyright of digital image: The Natural History Museum, London.

WP31.3

ARW in 1895.

Same as preceding photograph with the background altered.

The frontispiece to Fiske (1902). Scanned from that publication.

Copyright of digital image: Public domain.

WP32

ARW in 1895.

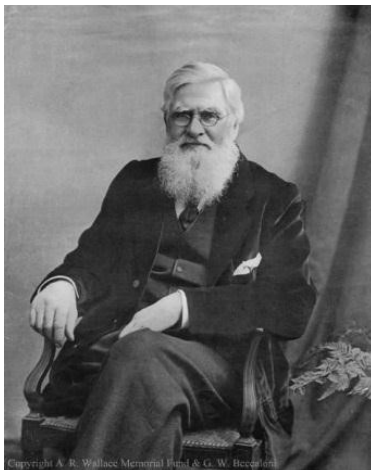
Photographer: London Stereoscopic & Photographic Co. Ltd., 54 Cheapside and 106 & 108 Regent Street, London. Taken at same sitting as the preceding image.

Scan of a cabinet card owned by the Wallace family. Dimensions of the card are 107 mm x 166 mm.

First published in Clodd, E. 1897. *Pioneers of Evolution from Thales to Huxley*, between pages 126 & 127.

Copyright of digital image: A. R. Wallace Memorial Fund & G. W. Beccaloni. ★

WP33.1

ARW in 1895.

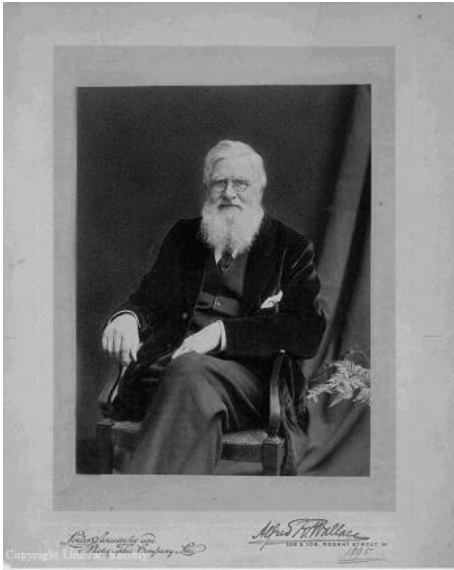
Photographer: London Stereoscopic & Photographic Co. Ltd. Taken at same sitting as the preceding image.

The painting of ARW by Roger Remington in the Linnean Society of London is based on this photograph

First published in *Borderland*, 3 (April 1896), p. 174. Scanned from *The Sphere*, November 15 1913, p. 163.

Copyright of digital image: A. R. Wallace Memorial Fund & G. W. Beccaloni. ★

WP33.2

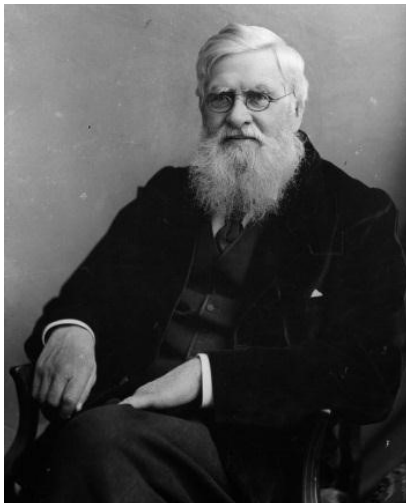
ARW in 1895.

Same as the preceding photograph.

Scan of a mounted photographic print owned by the Linnean Society of London (catalogue number C33140). The mount of this example is signed in ink by ARW and dated "1895" in ink.

Copyright of digital image: Linnean Society of London.

WP34

ARW in 1895.

Photographer: London Stereoscopic & Photographic Co. Ltd. Taken at same sitting as the preceding image.

Copyright of digital image: Found on Internet. Appears to be Public Domain.

WP35

ARW on 28 June 1895, aged 72, in the garden of his house Corfe View, Parkstone, Dorset.

Photographer: possibly Alvina Bertram Comerford-Casey.

Scan of a photographic print owned by the Wallace family. Dimensions of the photographic image are 97 mm x 104 mm. An annotation in ink on the card mount below the photograph reads "Dr Wallace in his garden. Photograph taken June 28th 95." and a pencil annotation below that reads "Reproduce for Bookman. A little might be cut off both sides & from the [illegible] to stress the figure | [2 words illegible]" A pencil annotation on a white label on the verso reads "S.S. cut a little off both sides & bottom as marked | Bookman".

Copyright of digital image: A. R. Wallace Memorial Fund & G. W. Beccaloni. ★

WP36



ARW in August 1896, aged 73, with his son William, in the garden of his house Corfe View, Parkstone, Dorset.

Photographer: possibly Alvina Bertram Comerford-Casey.

Scan of a photographic print owned by the Wallace family. Dimensions of the photographic image are 101 mm x 74 mm. An ink annotation below the photograph reads "Corfe View. Aug. 96".

First published on the Wallace Memorial Fund website in March 2010.

Copyright of digital image and owner of Publication Right: A. R. Wallace Memorial Fund & G. W. Beccaloni. ★



WP37



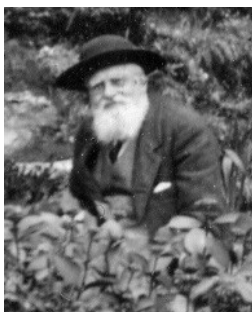
ARW in the late 1890s, with his daughter Violet, in the garden of his house Corfe View, Parkstone, Dorset.

Photographer: possibly Alvina Bertram Comerford-Casey.

Scan of a photographic print owned by the Wallace family. Dimensions of the photographic image are 159 mm x 113 mm.

First published on the Wallace Memorial Fund website in 2010.

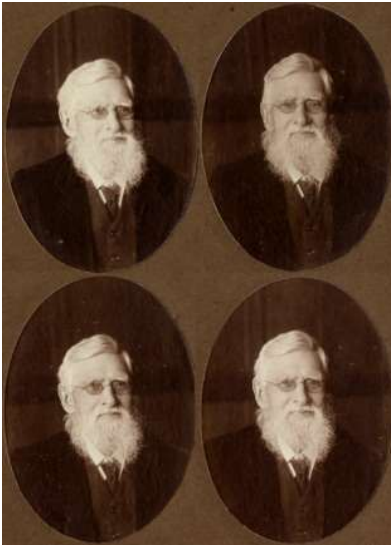
Copyright of digital image and owner of Publication Right: A. R. Wallace Memorial Fund & G. W. Beccaloni. ★



WP38 WP39

ARW, probably in the late 1890s.

WP40 WP41



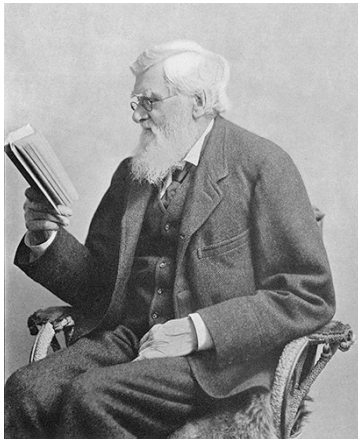
Photographer: unknown.

Scan of a series of four photographs mounted on a linear strip of card measuring 429 mm x 143 mm. The scan was divided into two and one half was placed below the other to produce this image. This item is owned by the Wallace family.

First published on the Wallace Memorial Fund website in March 2010.

Copyright of digital image and owner of Publication Right: A. R. Wallace Memorial Fund & G. W. Beccaloni. ★

WP42

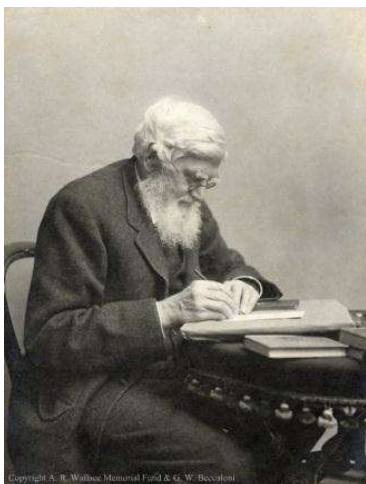
ARW in c. 1898/99.

Photographer: unknown (possibly Florence Chant).

Scan of an illustration in Werckmeister, K. 1899. *Das Neunzehnte Jahrhundert in Bildnissen*, volume 2, pl. 183. Dimensions of the published image are 145 mm x 196 mm.

Copyright of digital image: G. W. Beccaloni ★

WP43

ARW in c. 1898-1900.

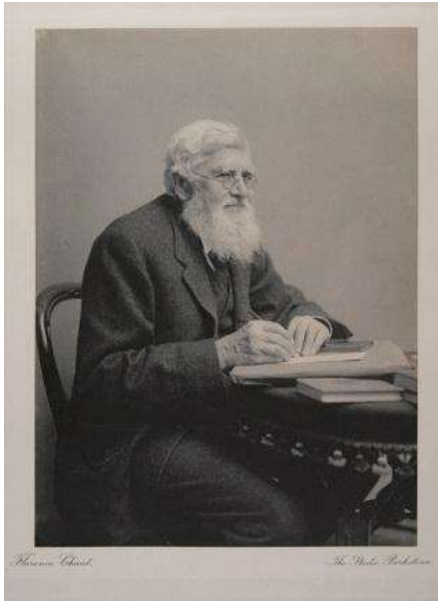
Photographer: Florence Chant, The Studio, Parkstone, Dorset.

Scan of a photographic print owned by the Wallace family. Dimensions of the photographic image are 150 mm x 200 mm.

First published in *Nature*, **89** (13 June 1912), between pages 366 & 367.

Copyright of digital image: A. R. Wallace Memorial Fund & G. W. Beccaloni. ★

WP44

ARW in c. 1898-1900.

Photographer: Florence Chant, The Studio, Parkstone, Dorset. Taken at the same sitting as the preceding image.

Scan of a photographic print owned by Oxford University Museum.

First published (as a cropped version of the portrait to the left) in ARW's book *Travels on the Amazon and Rio Negro*. Ward, Lock & Co. (n.d.. 1900?).

Copyright of digital image: Oxford University Museum, UK.

WP45.1

ARW in 1900, aged 77.

Artist: Albert Bruce-Joy.

Oval medallion in bronze, measuring c. 220 mm x 270 mm, owned by the Wellcome Library, London (object number ICV No 18440).

This sculpture was based on a number of sittings with ARW in 1900 (see letter from Bruce-Joy to ARW dated 21 June? 1900 ([WCP3193](#))). The medallion is dated 1906 at the top right and the delay in its production was explained in a note written on 28 January 1916 by ARW's son William (WCP7220): "While Mr. Bruce-Joy was at work on the portrait a fire occurred at his studio which destroyed his work on the medallion. I am not sure whether he found it necessary to make further studies from life, but the completion of the portrait was delayed...". Note that there is a large circular portrait medallion in white marble in Westminster Abbey, London, which is a mirror image of this portrait. It is fixed to the wall of the North Aisle of the Choir, between the commemorative sculptures of Charles Darwin and Joseph Lister, and is inscribed "ALFRED RUSSELL WALLACE 1823-1913". It was commissioned by the Wallace Memorial Committee after ARW's death and carved by Bruce-Joy. It was unveiled on 1st November 1915. For more information see <https://wallacefund.myspecies.info/content/paintings-and-sculptures>

Copyright of digital image: Public domain.

WP45.2

ARW in 1900, aged 77.



Artist: Albert Bruce-Joy.

Oval medallion in plaster, measuring 232 mm x 279 mm, in the National Portrait Gallery. It was donated by William and Violet Wallace in 1916 (NPG 1764).

This medallion appears to be a copy of the preceding one, and it lacks the fine details of the bronze version, especially on the beard, as do all the other versions described below.

Copyright of digital image: National Portrait Gallery, London. Licensed under Creative Commons Attribution-NonCommercial-NoDerivs 3.0-Unported (<http://creativecommons.org/licenses/by-nc-nd/3.0/>)

WP45.3

ARW in 1900, aged 77.



Artist: Albert Bruce-Joy.

Scan of an illustration from *Black & White* magazine, May 30 1908, p. 682, of a silver version of the preceding medallion, which was exhibited by Bruce-Joy at The Royal Academy (and possibly elsewhere) in 1908. No dimensions are given, but as it was cast in silver it is most likely to have been much smaller than the preceding medallions. In a letter to his son William dated 17 May 1908 ([WCP138](#)) ARW wrote "Mr. Bruce Joy has just written to tell me that his medallion of me, in silver, is in the R.A. this year & well shown. If you go through London & have time you had better go & see it." In a note written by ARW's son William on 28 January 1916 (WCP7220) he said "A replica of this medallion was exhibited in the Royal Academy, but I cannot state the year. It may have been on a smaller scale." (see <https://wallacefund.myspecies.info/national-portrait-gallery-portraits>).

Copyright of digital image: Public domain.

WP45.4

ARW in 1900, aged 77.

Artist: Albert Bruce-Joy.

Oval medallion in plaster, measuring 77 mm x 63 mm, in a private collection. On the verso is a pencil inscription which reads "Arthur [sic] Russell [sic] Wallace FRS &c | To D^r A^r Saunders with kind regards from the Sculptor A. Bruce-Joy 23^d Oct 1908". The fine details of this portrait exactly match those of the much larger versions above, so it must have been made using a pantograph to reduce the image in size. I think it likely that it is a copy of the silver version of the medallion exhibited in 1908. This conjecture seems to be supported by the existence of the silvered version described below.

Copyright of digital image: G. W. Beccaloni. ★

WP45.5

ARW in 1900, aged 77.

Artist: Albert Bruce-Joy.

Oval medallion in silvered copper, measuring 73 mm x 60 mm, owned by the Wallace family. Although the overall dimensions are smaller than the preceding plaster medallion, the sculpture of ARW is exactly the same size. This medallion is an electrotype copy of an original, quite possibly of a plaster version like the one above. The inscription at the top is barely visible and much other detail has also been lost compared to the preceding plaster version.

Copyright of digital image: A. R. Wallace Memorial Fund & G. W. Beccaloni. ★

WP46

ARW on 23 August 1901, aged 78, having a picnic at Badbury Rings, Dorset with family and friends.

Photographer: probably Alvina Bertram Comerford-Casey.

Scan of a photographic print owned by the Wallace family. Dimensions of the photographic image are 101 mm x 75 mm. A pencil annotation on the verso reads "A picnic at Badbury Rings | D^r & M^{rs}[.] Violet & Will Wallace - & Miss Milten (left)" and an annotation in ink reads "Aug 23. 1901".

First published on the Wallace Memorial Fund website in March 2010.

Copyright of digital image and owner of Publication Right: A. R. Wallace Memorial Fund & G. W. Beccaloni. ★

WP47

ARW on 23 August 1901, aged 78, having a picnic at Badbury Rings, Dorset with family and friends.



Photographer: probably Alvina Bertram Comerford-Casey.

Scan of a photographic print owned by the Wallace family. Dimensions of the photographic image are 96 mm x 69 mm.

Copyright of digital image: A. R. Wallace Memorial Fund & G. W. Beccaloni. ★

WP48

ARW on 23 August 1901, aged 78, relaxing at Badbury Rings, Dorset.



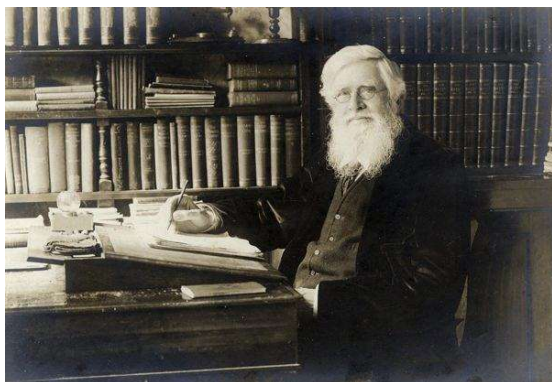
Photographer: Alvina Bertram Comerford-Casey.

Scan of a photographic print owned by the Wallace family. Dimensions of the photographic image are 96 mm x 71 mm. A pencil annotation on the verso reads "A. R. Wallace on a picnic at Badbury Rings" and an annotation in ink reads "Aug 23. 1901". Another copy of this photograph (from a collection of manuscripts owned by the Comerford-Casey family, sold at auction 28 March 2019) has the following pencil annotation on the verso: "Alfred Russel Wallace waiting for his tea at Badbury Rings! Taken & enlarged by A. B. C. C. [Alvina Bertram Comerford-Casey] Aug 23. 1901. We had rival kettles boiling on fircones & spirits!".

Copyright of digital image and owner of Publication Right: A. R. Wallace Memorial Fund & G. W. Beccaloni. ★

WP49

ARW in c. 1901, in his study.



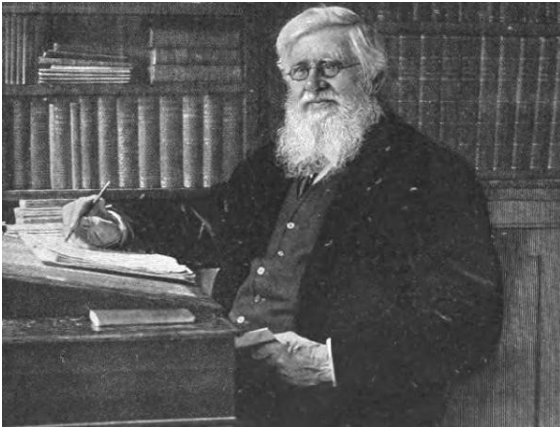
Photographer: Florence Chant, The Studio, Parkstone, Dorset.

Scan of a photographic print owned by the Wallace family. Dimensions of the photographic image are 146 mm x 102 mm. "F Chant | The Studio | Parkstone" is written in ink on the bottom right of the card mount surrounding the photograph.

First published in *Christian Commonwealth*, 23 (10 Dec. 1903), p. 177.

Copyright of digital image: A. R. Wallace Memorial Fund & G. W. Beccaloni. ★

WP50

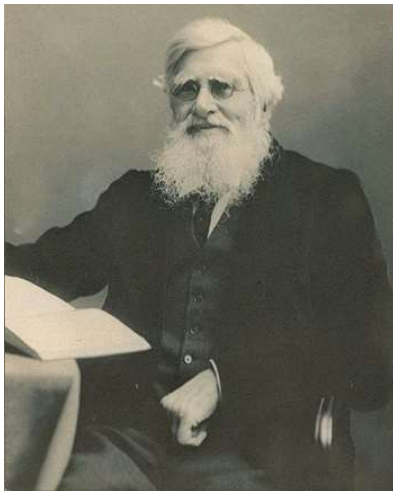
ARW in c. 1901, in his study.

Photographer: Florence Chant, The Studio, Parkstone, Dorset. Taken at the same sitting as the preceding image.

First published in *McClure's Magazine*, 17 (Aug. 1901), p. 333, and scanned from a poor-quality reproduction of that publication.

Copyright of digital image: Public domain.

WP51

ARW in 1902, aged 79.

Photographer: Florence Chant, Parkstone, Dorset.

Scan of a photographic print in a private collection, mounted on grey card. The mount is signed in ink by ARW below the image.

Copyright of digital image: unknown.

WP52.1

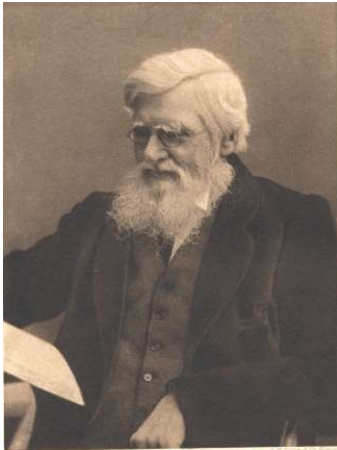
ARW in 1902, aged 79.

Photographer: Florence Chant, Parkstone, Dorset. Taken at same sitting as the preceding photograph.

A platinum print measuring 111 mm x 162 mm. It was donated to the National Portrait Gallery by William and Violet Wallace in 1916 (Photographs Collection NPG x5114).

Copyright of digital image: National Portrait Gallery, London. Licensed under Creative Commons Attribution-NonCommercial-NoDerivs 3.0-Unported (<http://creativecommons.org/licenses/by-nc-nd/3.0/>)

WP52.2

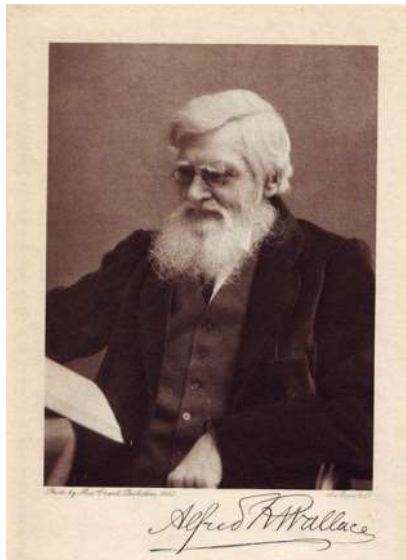
ARW in 1902, aged 79.

Same as the preceding photograph.

First published in ARW's autobiography *My Life* (1905) and scanned from that publication. In this book ARW states that this photograph was taken in 1902 when he was aged 80. Two other sources confirm the year, but he was 79 in 1902.

Copyright of digital image: A. R. Wallace Memorial Fund & G. W. Beccaloni. ★

WP52.3

ARW in 1902, aged 79.

Same as the preceding photograph.

A photographic print, signed on the card mount in ink by ARW.

Copyright of digital image: Barking and District Historical Society.

WP53

ARW, probably in 1902.

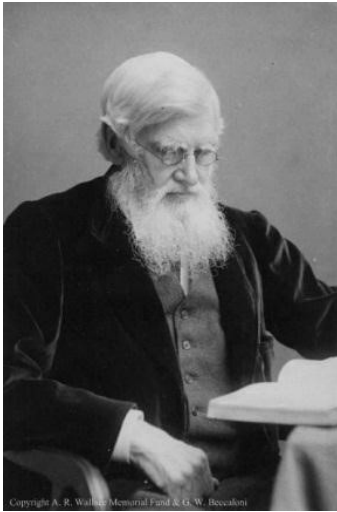
Artist: unknown.

Scan of what appears to be a painting, published on p. 498 of Salvadori (1913).

This portrait seems to be most similar to the preceding photographic portrait (WP52). It is possibly an original artwork based on one or more photographic portraits (and therefore not made from life), or it may be a painting of a 'lost' photographic portrait. There is also a possibility that it is an original artwork made from life, although this seems less likely.

Copyright of digital image: Public domain.

WP54

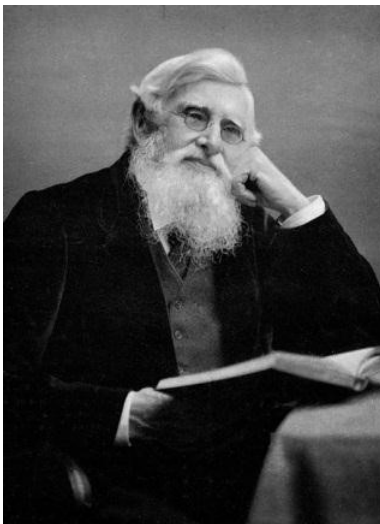
ARW in 1902, aged 79.

Photographer: Florence Chant, Parkstone, Dorset. Probably taken at same sitting as portraits WP51 and WP52 (and possibly WP53).

Scan of a photographic print owned by the Wallace family. Dimensions of the photographic image are 101 mm x 152 mm.

Copyright of digital image: A. R. Wallace Memorial Fund & G. W. Beccaloni. ★

WP55.1

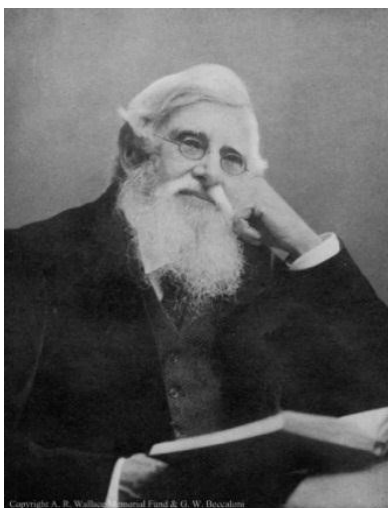
ARW in 1902, aged 79.

Photographer: Florence Chant, Parkstone, Dorset. Taken at same sitting as the preceding photograph.

Scanned from *Light* (London), 25 (4 Nov. 1905), between pages 516 & 517.

Copyright of digital image: Charles H. Smith.

WP55.2

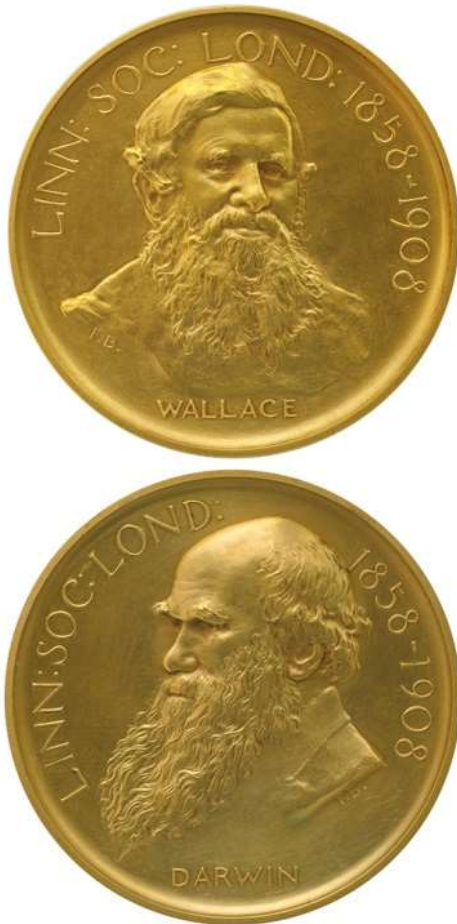
ARW in 1902, aged 79.

Same as the preceding photograph.

Scan of the frontispiece in Kinman, G. W. 1914. *A Great Hertfordian*. Hertford: Austin & Sons, 12pp. It is a copy of a photographic print belonging to the Richard Hale School, Hertford, UK.

Copyright of digital image: A. R. Wallace Memorial Fund & G. W. Beccaloni. ★

WP56

ARW, probably in 1902.

Artist: Frank Bowcher.

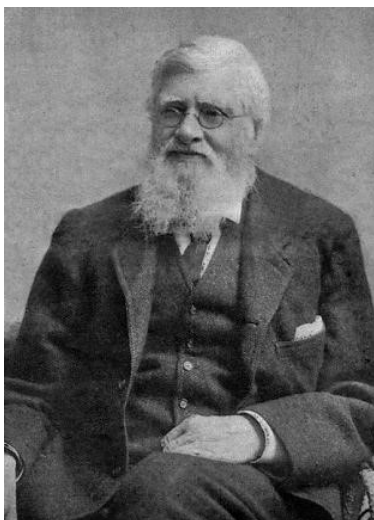
Photograph of ARW's gold Darwin-Wallace medal, owned by the Wallace family. The medal is 48 mm in diameter.

This medal was commissioned by the Linnean Society of London to commemorate the 50th anniversary of the reading of the Darwin-Wallace papers on natural selection at the Society on the 1st July 1858. The sculpture of ARW is probably based on the preceding photograph, with modifications. At the anniversary celebration on 1 July 1908 seven prominent biologists were presented with the newly minted medal. ARW was awarded the only gold version ever made (seen to the left), whilst the other six received silver versions. Silver versions have been awarded since and bronze copies have been sold by the Society to collectors. The British Museum have the "plaster model for the obverse of the Linnean Society's Darwin-Wallace medal, showing the "Bust of Alfred Russell [*sic*] Wallace to front... Diameter 174 mm, thickness 16 mm", which they purchased in 2004 (see https://www.britishmuseum.org/collection/object/C_2004-0107-22). This is probably the master model; the design being reduced in size using a pantograph to produce the hardened steel dies used to mint the medal.

For more information about the medal see <https://wallacefund.myspecies.info/content/darwin-wallace-medal>

Copyright of digital image: A. R. Wallace Memorial Fund & G. W. Beccaloni. ★

WP57

ARW, possibly in 1902.

Photographer: Florence Chant, Parkstone, Dorset.

First published in *Christian Commonwealth*, 23 (10 Dec. 1903), p. 176, and scanned from that publication.

Copyright of digital image: A. R. Wallace Memorial Fund & G. W. Beccaloni. ★

WP58

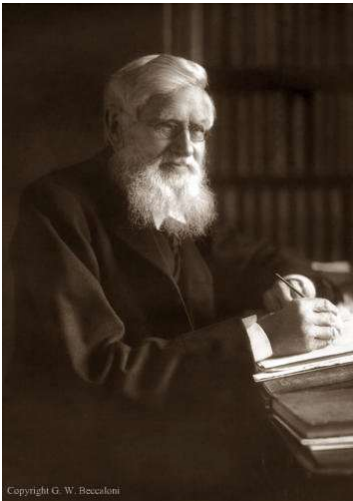
ARW, possibly in 1902.

Photographer: Florence Chant, Parkstone, Dorset.

First published in *The Book Monthly*, **2** (October 1904), p. 4. and scanned from a poor-quality reproduction of that publication.

Copyright of digital image: Public domain.

WP59.1

ARW on 8 January 1903, aged 80.

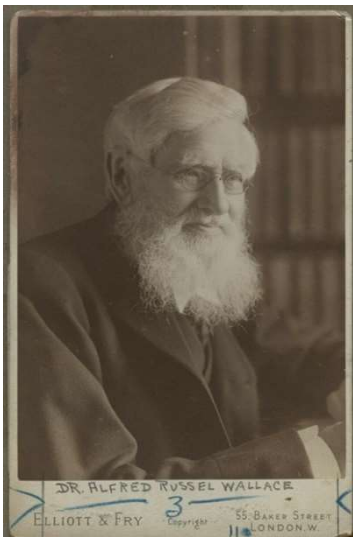
Photographer: Elliott & Fry, 55 Baker Street, London.

Photographed from a photographic print owned by the Wallace family. Dimensions of the photographic image are 216 mm x 297 mm.

First published in *Black and White* (London), **25** (17 January 1903), p. 79. The caption reads "Photo specially taken for "Black and White" by Elliott and Fry" and "Dr. Wallace...on his eightieth birthday last week.").

Copyright of digital image: G. W. Beccaloni. ★

WP59.2

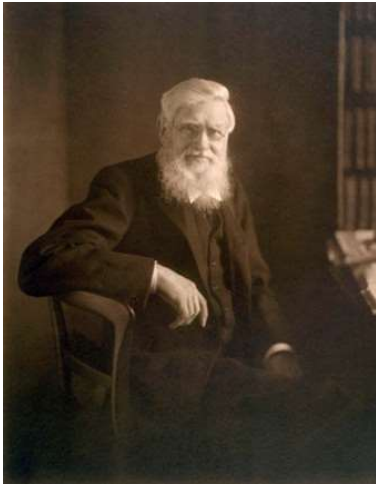
ARW on 8 January 1903, aged 80.

Same as the preceding photograph.

Photograph of a cabinet card in a private collection. Dimensions of the card are 107 mm x 160 mm.

Copyright of digital image: unknown.

WP60

ARW on 8 January 1903, aged 80.

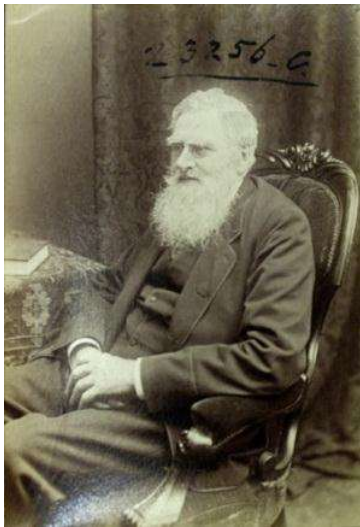
Photographer: Elliott & Fry. Taken at the same sitting as the preceding photograph.

Scan of a photographic print owned by English Heritage.

An oil painting based on this photograph (or painted on top of a photographic image on canvas) was presented to the British Museum (Natural History) (now London's Natural History Museum) and unveiled on 23 June 1923 to commemorate the 100th anniversary of ARW's birth. The artist was J. W. Beaufort (probably professional photographer John William Beaufort (1864-1943)).

Copyright of digital image: English Heritage.

WP61

ARW in ?

Photographer: unknown.

Photograph of a photographic print owned by the Wallace family. Dimensions of the photographic image are 96 mm x 140 mm.

Copyright of digital image: G. W. Beccaloni.

WP62

ARW in ?

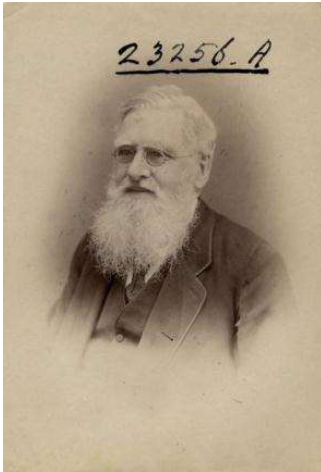
Photographer: unknown. Taken at same sitting as preceding photograph.

Scan of a photographic print owned by the Wallace family. Dimensions of the photographic image are 96 mm x 140 mm.

Copyright of digital image: A. R. Wallace Memorial Fund & G. W. Beccaloni. ★

WP63

ARW in ?



Photographer: unknown. Taken at same sitting as preceding photograph.

Scan of a photographic print owned by the Wallace family. Dimensions of the photographic image are 96 mm x 139 mm.

Copyright of digital image: A. R. Wallace Memorial Fund & G. W. Beccaloni. ★

WP64

ARW in ?



Photographer: unknown. Taken at same sitting as preceding photograph.

Scan of a photographic print owned by the Wallace family. Dimensions of the photographic image are 96 mm x 139 mm.

Copyright of digital image: A. R. Wallace Memorial Fund & G. W. Beccaloni. ★

WP65.1

ARW on 29 January 1904, aged 81.



Artist: Sir William Rothenstein.

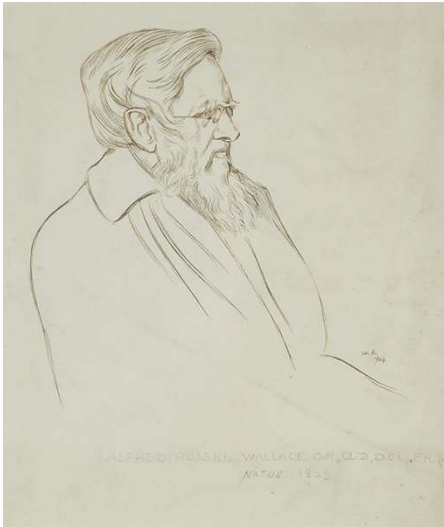
Proof of a lithograph of a pencil sketch drawn from life by Rothenstein on 29 January 1904 (see letter from ARW to Rothenstein dated 26 January 1904 ([WCP5232](#)) and letter from ARW to his son William dated 12 February 1904 ([WCP85](#))). It was posted by Rothenstein to ARW in early February 1904 and is inscribed in pencil on the right beneath the image "To Dr A. R. Wallace. W. Rothenstein Feb 1904". "W. R. | 04" is printed next to image on the lower left. This item is owned by the Wallace family.

ARW was not very taken with the portrait and wrote to Rothenstein on 14 February 1904 ([WCP5230](#)): "The face...seems to me rather too delicate in feature, too small in mouth, too young-looking! and with that very bored expression which I can't help taking on when sitting up to order & being looked at." The original drawing is said to be owned by the Royal Botanic Garden, Kew (Verdcourt, 1981).

Copyright of digital image: G. W. Beccaloni. ★

WP65.2

ARW on 29 January 1904, aged 81.



Artist: Sir William Rothenstein.

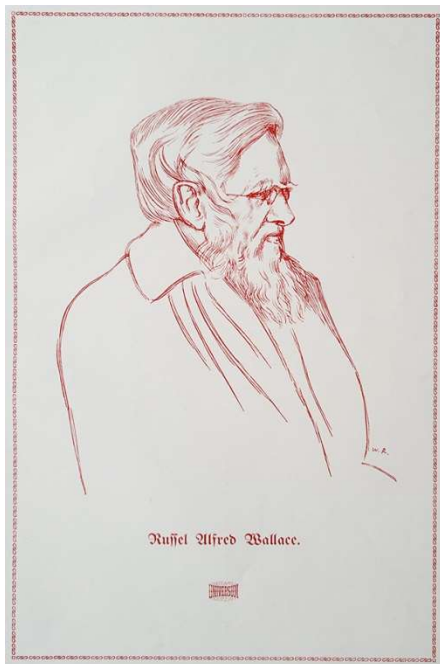
Pen and ink drawing by Rothenstein based on the preceding image, with dimensions 254 mm x 298 mm. It is signed "W. R. | 1904" to the lower right of the sketch. There is an inscription in pencil in another hand below the portrait.

This item was sold by Waddington's auction house in Canada on 28 June 2018 to an unknown buyer.

Copyright of digital image: Public domain?

WP65.3

ARW on 29 January 1904, aged 81.

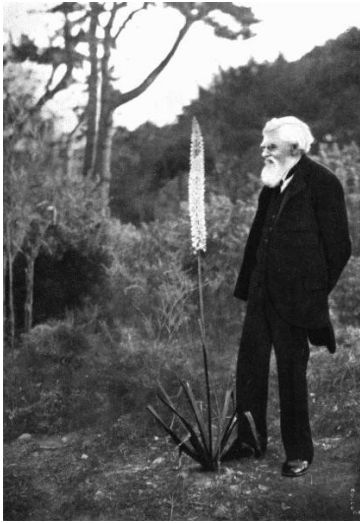


Artist: Sir William Rothenstein.

Photograph of a published print of the preceding ink drawing. Dimensions of printed border are 153 mm x 234 mm. Published in *Reclam's Universum*, a weekly periodical published in Leipzig, Germany. The publication date is unknown. "Russel Alfred Wallace" is printed below the image, and below that is a logo with the words "Reclam's | Universum | Leipzig". The initials "W. R." are printed to the lower right of the portrait, but in a different position to the preceding ink drawing.

Copyright of digital image: G. W. Beccaloni. ★

WP66



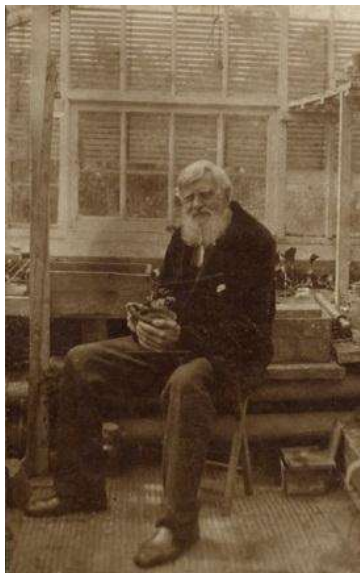
ARW in c. 1905, admiring *Eremurus robustus*.

Photographer: unknown.

First published in Marchant (1916) and scanned from that publication.

Copyright of digital image: A. R. Wallace Memorial Fund & G. W. Beccaloni. ★

WP67



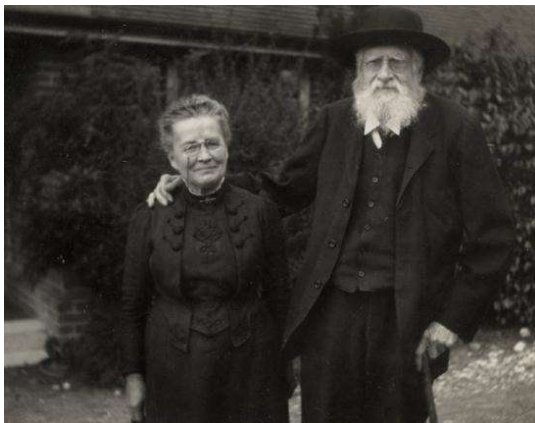
ARW in c. 1905?, probably in his greenhouse at Old Orchard, Broadstone, Dorset.

Photographer: unknown.

Scan of a photographic print (possibly not first generation) owned by the Wallace family. Dimensions of the photographic image are 78 mm x 126 mm.

Copyright of digital image: A. R. Wallace Memorial Fund & G. W. Beccaloni. ★

WP68



ARW in c. 1905?, with his wife Annie.

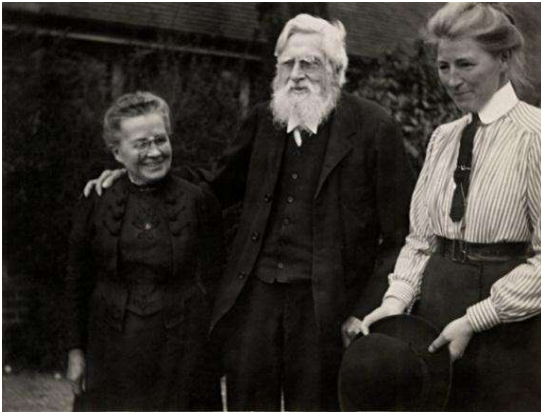
Photographer: unknown.

Scan of a photographic print owned by the Wallace family. Dimensions of the photographic image are 100 mm x 75 mm.

First published on the Wallace Memorial Fund website in 2010.

Copyright of digital image and owner of Publication Right: A. R. Wallace Memorial Fund & G. W. Beccaloni. ★

WP69

ARW in c. 1905?, with his wife Annie and their daughter Violet.

Photographer: unknown.

Scan of a photographic print on thin, glossy paper, owned by the Wallace family. Dimensions of the photographic image are 100 mm x 75 mm.

First published on the Wallace Memorial Fund website in March 2010.

Copyright of digital image and owner of Publication Right: A. R. Wallace Memorial Fund & G. W. Beccaloni. ★

WP70

ARW in c. 1905?, with his daughter Violet.

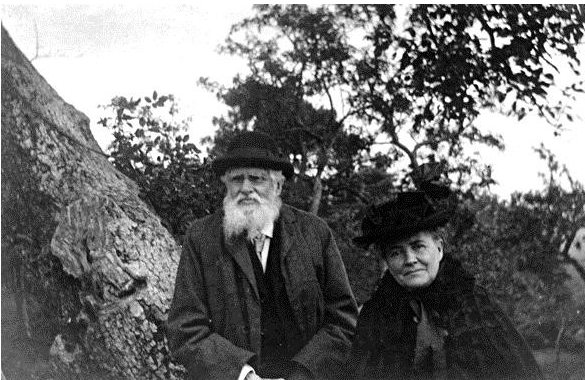
Photographer: unknown.

Scan of a photographic print on thin, glossy paper, owned by the Wallace family. Dimensions of the photographic image are 75 mm x 100 mm.

First published on the Wallace Memorial Fund website in March 2010.

Copyright of digital image and owner of Publication Right: A. R. Wallace Memorial Fund & G. W. Beccaloni. ★

WP71

ARW in c. 1905?, with his wife Annie.

Photographer: unknown.

Scan of a photographic print owned by the Wallace family. Dimensions of the photographic image are 80 mm x 50 mm.

First published on the Wallace Memorial Fund website in March 2010.

Copyright of digital image and owner of Publication Right: A. R. Wallace Memorial Fund & G. W. Beccaloni. ★

WP72



ARW in c. 1905?, with two unidentified people.

Photographer: unknown.

Scan of a photographic print on thin, glossy paper, owned by the Wallace family. Dimensions of the photographic image are 100 mm x 75 mm.

First published on the Wallace Memorial Fund website in March 2010.

Copyright of digital image and owner of Publication Right: A. R. Wallace Memorial Fund & G. W. Beccaloni. ★

WP73



ARW in c. 1905?, outside his house Old Orchard, Broadstone, Dorset.

Photographer: possibly Alvina Bertram Comerford-Casey.

Scanned from ARW's book *The Revolt of Democracy* (1913). An original photographic print of this image was sold at auction 28 March 2019 in a collection of manuscripts owned by the Comerford-Casey family. This suggests the photographer was a member of the Comerford-Casey family, most probably Alvina Bertram, who is known to have taken a number of other photographs of Old Orchard and ARW.

Copyright of digital image: Public domain.



WP74



ARW in c. 1905?, outside his greenhouse at Old Orchard, Broadstone, Dorset.

Photographer: possibly Alvina Bertram Comerford-Casey.

Photograph of a photographic print from a collection of manuscripts owned by the Comerford-Casey family, sold at auction 28 March 2019. A pencil inscription on the verso reads "A Botanical demonstration at Broadstone!"

Copyright of digital image: G. W. Beccaloni. ★

WP75



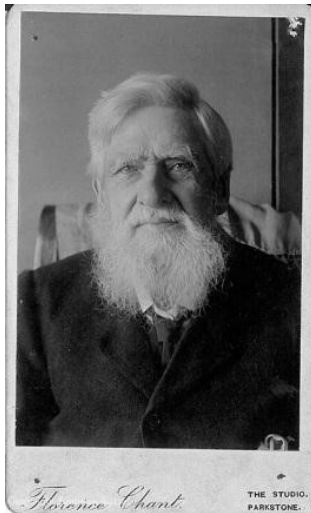
ARW in April 1908, aged 85, without his glasses.

Photographer: Florence Chant, Parkstone, Dorset.

Scan of a platinum print measuring 59 mm x 94 mm. It was donated to the National Portrait Gallery by William and Violet Wallace in 1916 (Photographs Collection NPG x5116).

Copyright of digital image: National Portrait Gallery, London. Licensed under Creative Commons Attribution-NonCommercial-NoDerivs 3.0-Unported (<http://creativecommons.org/licenses/by-nc-nd/3.0/>)

WP76



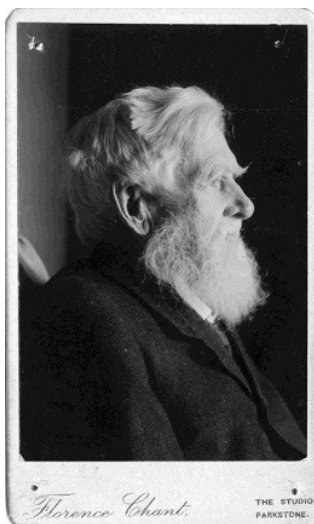
ARW in April 1908, aged 85, without his glasses.

Photographer: Florence Chant, The Studio, Parkstone, Dorset. Taken at same sitting as preceding photograph.

Scan of a carte de visite owned by the Linnean Society of London (catalogue number C33143). A platinum print of this image, measuring 59 mm x 95 mm, was donated by William and Violet Wallace in 1916 to the National Portrait Gallery (Photographs Collection NPG x5119).

Copyright of digital image: Linnean Society of London.

WP77



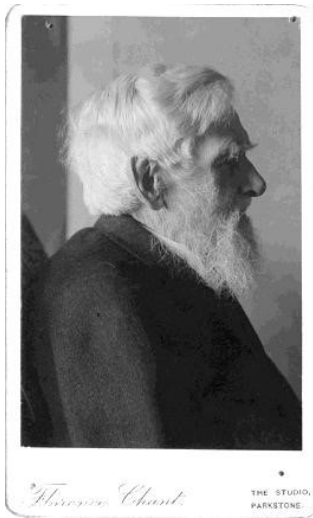
ARW in April 1908, aged 85, without his glasses.

Photographer: Florence Chant, The Studio, Parkstone, Dorset. Taken at same sitting as preceding photograph.

Scan of a carte de visite owned by the Linnean Society of London. A platinum print of this image, measuring 59 mm x 95 mm, was donated by William and Violet Wallace in 1916 to the National Portrait Gallery (Photographs Collection NPG x5118).

Copyright of digital image: Linnean Society of London.

WP78



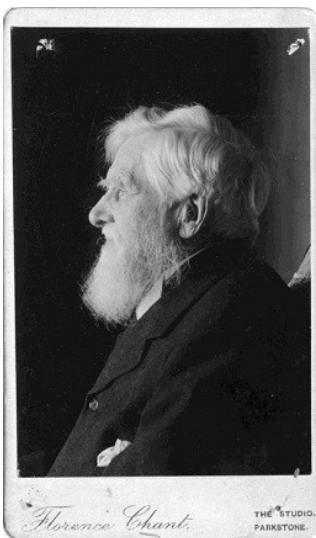
ARW in April 1908, aged 85, without his glasses.

Photographer: Florence Chant, The Studio, Parkstone, Dorset. Taken at same sitting as preceding photograph.

Scan of a carte de visite owned by the Linnean Society of London. A platinum print of this image, measuring 59 mm x 95 mm, was donated by William and Violet Wallace in 1916 to the National Portrait Gallery (Photographs Collection NPG x5115).

Copyright of digital image: Linnean Society of London.

WP79



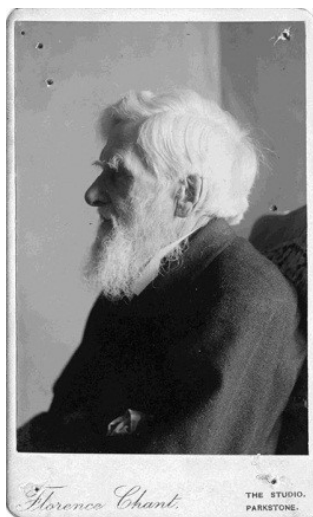
ARW in April 1908, aged 85, without his glasses.

Photographer: Florence Chant, The Studio, Parkstone, Dorset. Taken at same sitting as preceding photograph.

Scan of a carte de visite owned by the Linnean Society of London. A platinum print of this image, measuring 59 mm x 95 mm, was donated by William and Violet Wallace in 1916 to the National Portrait Gallery (Photographs Collection NPG x5117).

Copyright of digital image: Linnean Society of London.

WP80



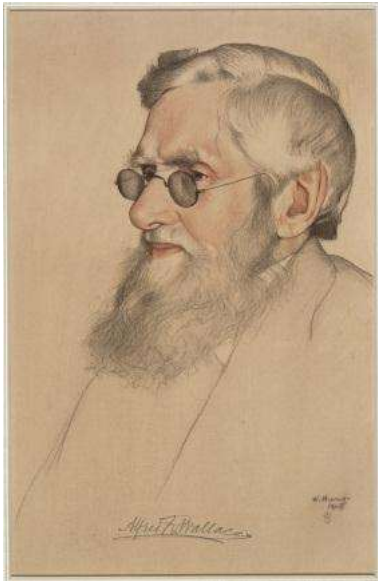
ARW in April 1908, aged 85, without his glasses.

Photographer: Florence Chant, The Studio, Parkstone, Dorset. Taken at same sitting as preceding photograph.

Scan of a carte de visite owned by the Linnean Society of London. A platinum print of this image, measuring 59 mm x 96 mm, was donated by William and Violet Wallace in 1916 to the National Portrait Gallery (Photographs Collection NPG x5120).

Copyright of digital image: Linnean Society of London.

WP81

ARW in December 1908, aged 85.

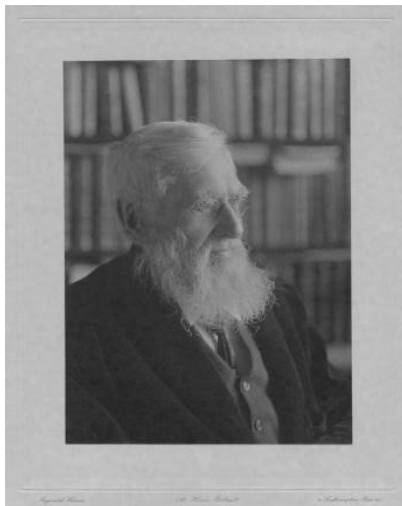
Artist: William Strang.

Photograph of a life-size portrait in coloured chalks, drawn from life at Wallace's home, Old Orchard, Broadstone, Dorset. It was commissioned by King Edward VII when he awarded ARW the Order of Merit and is the property of the Royal Collection Trust. It is signed in pencil by ARW, presumably as an approbation.

ARW said in a letter to James Marchant dated 3 October 1913 ([WCP6554](#)) that he thought this portrait "...was an admirable likeness."

Copyright of digital image: Her Majesty Queen Elizabeth II 2015. No copyright or proprietary right is conveyed with the use of any image. Images may not be passed on for third-party use. Images may be cropped but not changed or manipulated in any way without written permission from the Royal Collection. Images may not be used in any way which could be considered deceptive or which could reflect unfavourably upon the good name or reputation of Her Majesty The Queen, the Royal Family or the Royal Collection.

WP82.1

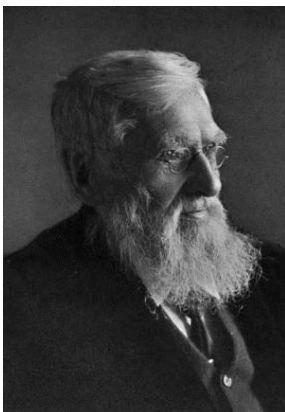
ARW in December 1908, aged 85.

Photographer: Reginald Haines, Southampton Row, London.

Scan of a bromide print measuring 146 mm x 195 mm (*i.e.* excluding mount). It was donated to the National Portrait Gallery by William and Violet Wallace in 1916 (Photographs Collection NPG x5121). The date of the photograph was established from information in a letter from ARW to his son William dated 13 December 1908 ([WCP196](#)).

Copyright of digital image: National Portrait Gallery, London. Licensed under Creative Commons Attribution-NonCommercial-NoDerivs 3.0-Unported (<http://creativecommons.org/licenses/by-nc-nd/3.0/>).

WP82.2

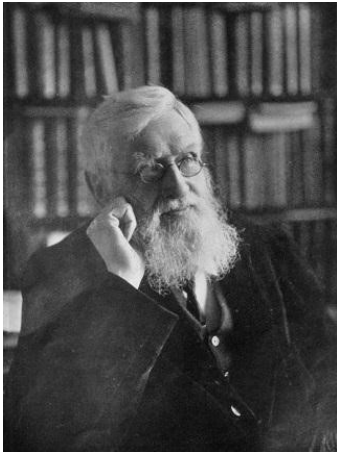
ARW in December 1908, aged 85.

Same as the preceding photograph, but with the background edited out.

First published in *Woman Worker*, 20 Jan. 1909, p. 51. Scanned from a poor-quality reproduction of ARW's book *Social Environment and Moral Progress* (1913).

Copyright of digital image: Public domain.

WP83

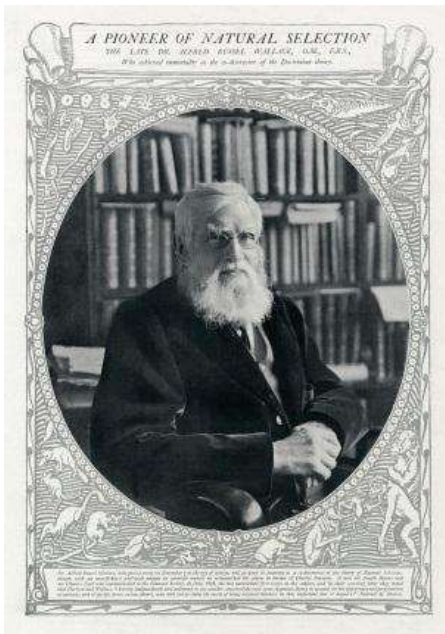
ARW in December 1908, aged 85.

Photographer: Reginald Haines. Taken at same sitting as the preceding photograph.

Published in *Bibby's Annual*, 1912, p. 15 and photographed from that publication.

Copyright of digital image: G. W. Beccaloni. ★

WP84.1

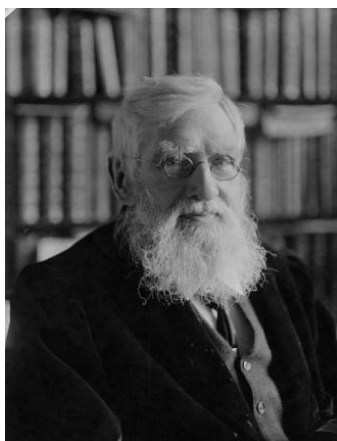
ARW in December 1908, aged 85.

Photographer: Reginald Haines. Taken at same sitting as the preceding photograph.

Published in *The Graphic*, November 15 1913, p. 889 and scanned from that publication. Dimensions of the photographic image (*i.e.* excluding decorative border) are 205 mm x 236 mm.

Copyright of digital image: A. R. Wallace Memorial Fund & G. W. Beccaloni. ★

WP84.2

ARW in December 1908, aged 85.

Same as the preceding photograph.

A bromide print measuring 154 mm x 202 mm. Purchased by the National Portrait Gallery in 1976 (Photographs Collection NPG x5124).

Copyright of digital image: National Portrait Gallery, London. Licensed under Creative Commons Attribution-NonCommercial-NoDerivs 3.0-Unported (<http://creativecommons.org/licenses/by-nc-nd/3.0/>).

WP84.3

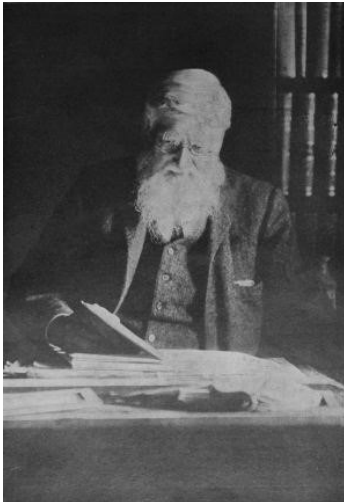
ARW in December 1908, aged 85.

Same as the preceding photograph, but with the background edited out.

First published in *Pall Mall Magazine*, **43** (March 1909), p 274. Scanned from a poor-quality copy of ARW's book *The Revolt of Democracy* (1913).

Copyright of digital image: Public domain.

WP85

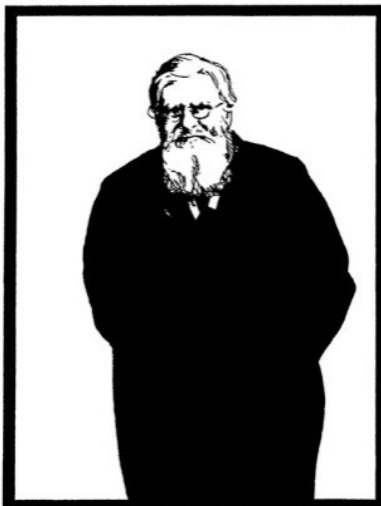
ARW in c. 1908, in his study at Old Orchard.

Photographer: William B. Northrop.

First published in *The Outlook* (New York), **105** (22 Nov. 1913), p. 618.

Copyright of digital image: G. W. Beccaloni. ★

WP86

ARW in ?

Artist: unknown.

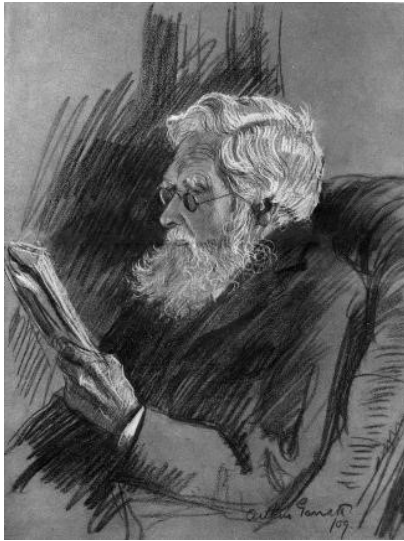
It is unknown whether this sketch was drawn from life or not.

Scanned from *The Occult Review*, **13** (March 1911), p. 140. First published in *T. P.'s Weekly* [year and issue unknown].

Copyright of digital image: Charles H. Smith.

DR. A. R. WALLACE.
[Reproduced by kind permission of "T. P.'s Weekly."]

WP87

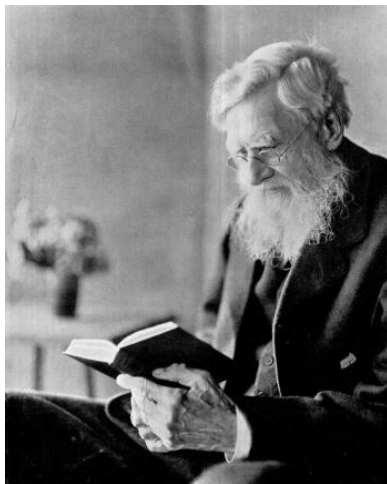
ARW in 1909, aged 86.

Artist: Arthur Garratt.

Drawn from life and published in *The Sphere*, 13 February 1909, p. 149.

Copyright of digital image: G. W. Beccaloni. ★

WP88

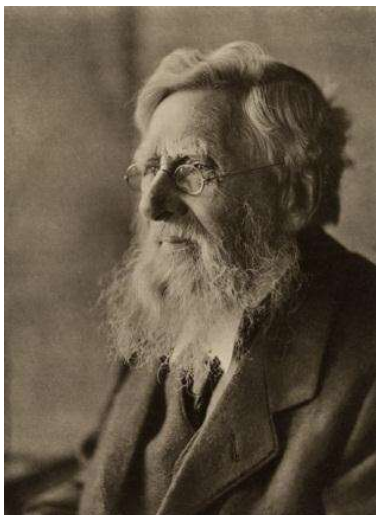
ARW in 1910.

Photographer: Emil Otto Hoppé.

First published in *The Illustrated London News*, Dec. 24 1910, p. 1007, and scanned from that publication. Dimensions of the published image are 223 mm x 277 mm. A platinotype print of this image, measuring 158 mm x 212 mm, was donated by William and Violet Wallace in 1916 to the National Portrait Gallery (Photographs Collection NPG x5122).

Copyright: Emil Otto Hoppé.

WP89

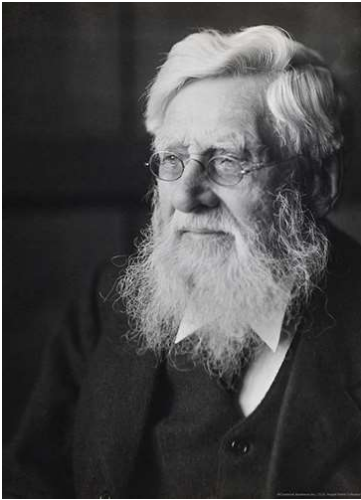
ARW in 1910.

Photographer: Emil Otto Hoppé. Taken at the same sitting as the preceding photograph, so Marchant's (1916) statement that it was taken in 1912 must be incorrect.

Scanned from an undated (probably 14 September 1912) Supplement to *The Illustrated London News* (no page number). The caption reads "...specially taken for 'The Illustrated London News,' by E. O. Hoppé." Dimensions of the published image are 227 mm x 312 mm. An example in a private collection was signed in ink below the image by ARW.

Copyright: Emil Otto Hoppé.

WP90

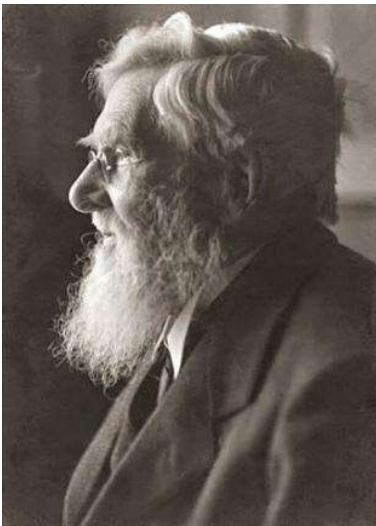
ARW in 1910.

Photographer: Emil Otto Hoppé. Taken at same sitting as the preceding photograph.

This image was found on the Internet, no other details are known.

Copyright: Emil Otto Hoppé.

WP91

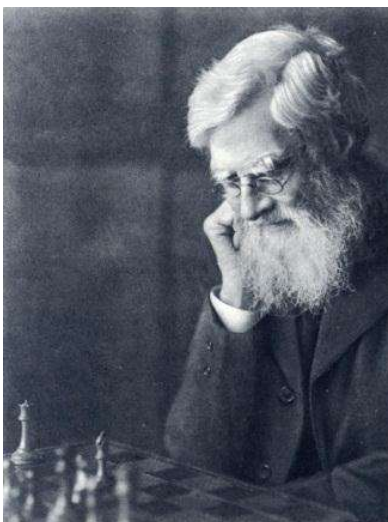
ARW in 1910.

Photographer: Emil Otto Hoppé. Taken at same sitting as the preceding photograph.

This image was found on the Internet, no other details are known.

Copyright: Emil Otto Hoppé.

WP92

ARW in 1910.

Photographer: Emil Otto Hoppé. This photo was probably taken at the same sitting as the preceding photograph.

First published in *The Illustrated London News*, 15 Nov. 1913, p. 797, and scanned from that publication. The caption to this image reads "...specially taken for 'The Illustrated London News,' by E. O. Hoppé." Dimensions of the published image are 220 mm x 291 mm.

Copyright: Emil Otto Hoppé.

WP93

ARW in 1912/13, aged 89.

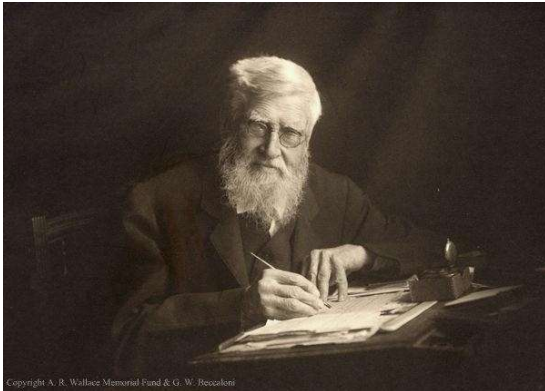
Photographer: unknown.

Scan of a portrait from an obituary of ARW in the *Leeds Mercury*, 8 November 1913. Several other British newspapers used this image of him for their obituary notices.

First (?) published in *The Daily Citizen*, **79** (Late London Edition), 8 January 1913, p. 1. The caption to this image reads "Dr. Alfred Russel Wallace, the grand old man of science, attains his 90th birthday to-day. This hitherto unpublished portrait of Darwin's famous contemporary was taken recently at The Old Orchard, Broadstone, Poole, where Dr. Wallace is living in the retirement necessitated by his years."

Copyright: public domain.

WP94

ARW aged 90, in 1913, the year he died.

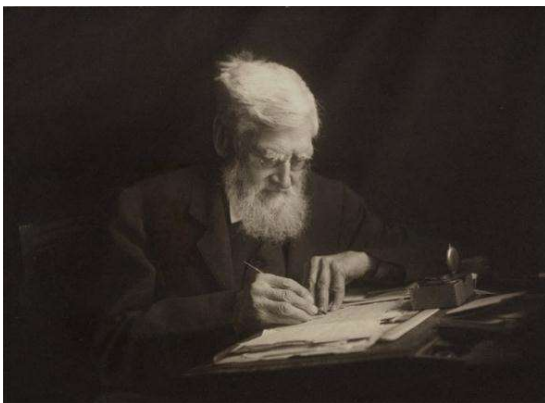
Photographer: Debenham & Gould, Bournemouth, Dorset. Marchant (1916) stated that this photograph was taken in 1913.

Scan of a photographic print owned by the Wallace family. Dimensions of the photographic image are 184 mm x 133 mm. "Debenham & Gould | Bournemouth" is written in ink on the bottom right of the card mount surrounding the photograph.

First published in Marchant (1916).

Copyright of digital image: A. R. Wallace Memorial Fund & G. W. Beccaloni. ★

WP95

ARW aged 90, in 1913, the year he died.

Photographer: Debenham & Gould, Bournemouth, Dorset. Taken at same sitting as the preceding photograph.

Scan of a photographic print owned by the Wallace family. Dimensions of the photographic image are 178 mm x 132 mm. "Debenham & Gould | Bournemouth" is written in ink on the bottom right of the card mount surrounding the photograph.

First published on the Wallace Memorial Fund website in 2010.

Copyright of digital image and owner of Publication Right: A. R. Wallace Memorial Fund & G. W. Beccaloni. ★

THE PHOTOGRAPHERS & ARTISTS

Baines, Thomas (1820–1875): Artist and explorer. [Source: https://en.wikipedia.org/wiki/Thomas_Baines]

Bowcher, Frank (1864-1938): Medallist. Founder-member of the Royal Society of British Sculptors. In 1903 he was appointed Engraver at the Royal Mint.

Bruce-Joy, Albert (1842-1924): Sculptor & medallist. [See https://sculpture.gla.ac.uk/view/person.php?id=msib5_1205356326]

Chant, Florence (1857-1930): Photographer with a studio in Parkstone, Dorset. She was the daughter of the engraver James John Chant and a friend of ARW.

Comerford-Casey, Alvina Bertram ("Bertie") (1877–1953): Daughter of George Edwards Comerford-Casey (formerly Casey) and Ellen Georgina Alvina Comerford-Casey (formerly Casey) (née Bertram). The Comerford-Casey family were close friends of the Wallace family.

Debenham & Gould: Photography firm based in Bournemouth, Dorset. Founded by Edwin Alfred Debenham (1844-1925) and Isaac Chalkley Gould (1853-1906). [Source: https://www.flickr.com/photos/alwyn_ladell/sets/72157629223671790/]

Elliott & Fry: This photography firm was one of the most important in the history of studio portraiture in London. It was founded in 1863 by Joseph John Elliott (1835-1903) and Clarence Edmund Fry (1840-1897). Their first premises were a series of studios at 55 Baker Street and they remained there until 1922. The firm existed until 1962 when it was absorbed into Bassano & Vandyk. [Source: <https://www.photolondon.org.uk/#/details?id=1242>]

Fradelle, Albert Eugene (1840-1884): Photographer who had a studio at Portland Bazaar, 19 Langham Place, Regent Street, London from 1864 to 1868. [Source: <https://www.photolondon.org.uk/#/details?id=2843>]

Garratt, Arthur Paine (1873-1955): British press artist and magazine illustrator.

Haines, Reginald James William (1872-1941): Portrait photographer with studios in Southampton Row, London. [For an obituary see *The Photographic Journal*, **81** (1941): 520.]

Hoppé, Emil Otto (1878-1972): German-born portrait and travel photographer with studios in London, who was active between 1907 and 1945. [Source: https://en.wikipedia.org/wiki/E._O._Hoppé]

Hudson, Frederick Augustus (1818-1910): Photographer with a series of studios in London. In the 1870s he specialised in 'spirit photography'. [<https://www.photolondon.org.uk/#/details?id=4019>]

London Stereoscopic & Photographic Co. Ltd.: London photography firm founded in 1859, which existed until 1922. [Source: <https://www.photolondon.org.uk/#/details?id=1249>]

Mansfield, George (?-?): Photographer with premises at 90 Grafton Street, Dublin from 1865 to 1873, and again from 1882 to 1892. [Source: <http://www.irisharchaeology.info/genealogy/photographers.html>]

Maull & Fox: Partnership between Henry Maull (1829–1914) and John Fox (1832-1907) with a series of London studios from 1879 until 1885. The studio was continued under the original name by others until it was officially closed in 1928. [Source: https://en.wikipedia.org/wiki/Henry_Maull]

Morton, Albert (1832-?): American artist and spiritualist, resident in San Francisco from 1876 to 1889, who edited and published *Psychic Studies*.

Moynet, Jean-Pierre (1819-1876): French painter and lithographer. [Source: https://fr.wikipedia.org/wiki/Jean-Pierre_Moynet]

Northrop, William B. (?-1929): American photographer and writer. [For an obituary see Anon. 1929. Death of W. B. Northrop. *Land and Freedom*, 29(3): 77-78.]

Rothenstein, William (1872-1945): Artist and writer, knighted in 1931. He was Principal of the Royal College of Art from 1920 to 1935. [Source: https://en.wikipedia.org/wiki/William_Rothenstein]

Sawyer & Bird: Partnership between John Robert Mather Sawyer (1828-1889) and Walter Strickland Bird (1828-1912) with a photographic studio at 87 Regent Street, London. Used the name "Sawyer & Bird" from 1 January 1871 until 1873. [Sources: <https://www.photolondon.org.uk/#/details?id=6854> and http://www.earlynorfolkphotographs.co.uk/Photographers/John%20Sawyer/John_Sawyer_photographer.html]

Sims, Thomas (1824-1910): Photographer who had studios in London and elsewhere. In partnership with his brother Edward (1837-1906) for a period. Thomas was ARW's brother-in-law, having married ARW's sister Frances (Fanny) in 1849. He was the eldest son of the Mr Thomas Sims, bootmaker, who ARW lodged with in Neath, Wales in 1845 and 1846. [Sources: <https://www.photolondon.org.uk/#/details?id=7058> and <https://www.photolondon.org.uk/#/details?id=7060>]

Sorrieu, Frédéric (1807-1887): French engraver. [Source: https://fr.wikipedia.org/wiki/Fr%C3%A9d%C3%A9ric_Sorrieu]

Strang, William (1859-1921): Scottish painter and engraver. He is perhaps best known now for his numerous chalk and pencil portraits of well-known people of the late-Victorian and Edwardian period. [Sources: https://en.wikipedia.org/wiki/William_Strang and <http://www.victorianweb.org/victorian/painting/strang/index.html>]

Taber, Isaiah West (1830-1912): American photographer with a studio in San Francisco, California, USA from 1871 to 1906. [Source: https://en.wikipedia.org/wiki/I._W._Taber]

Usherwood, William (1821-1915): Photographer in Dorking, Surrey from 1860 until he sold the business in 1907. [Source: <http://www.cartedevsite.co.uk/photographers-category/biographies/s-to-z/usherwood-william/>]

REFERENCES

- Chua, C.** 2020. *Some Original Sketches of Alfred Russel Wallace in Contemporary Newspapers*. 18pp. WWW electronic publication. <http://darwin-online.org.uk/converted/pdf/2020_ARW_Sketches_A1126.pdf>
- Fiske, J.** 1902. *Outlines of Cosmic Philosophy*. Vol. 4. Boston and New York: Houghton, Mifflin & Co.
- Marchant, J.** 1916. *Alfred Russel Wallace: Letters and Reminiscences*, 2 Vols. London, New York, Toronto and Melbourne: Cassell & Company, Ltd.
- Salvadori, G.** 1913. Alfred Russel Wallace. *Nuova Antologia di Lettere, Scienze ed Arti*, **168** (1 Dec. 1913): 498-508.
- Verdcourt, B.** 1982. A. R. Wallace in Bedfordshire. *Bedfordshire Magazine*, **18**(142): 150-152.
- Wallace, A. R.** 1869. *The Malay Archipelago; The Land of the Orang-utan and the Bird of Paradise; A Narrative of Travel With Studies of Man and Nature*. 2 Vols. London: Macmillan & Co.
- Wallace, A. R.** 1872. L'archipel malaisien, patrie de l'orang-outang et de l'oiseau de paradis: récits de voyage et étude de l'homme et de la nature. *Le Tour du Monde*, **24**: 241-256.
- Wallace, A. R.** 1873. L'archipel malaisien, patrie de l'orang-outang et de l'oiseau de paradis: récits de voyage et étude de l'homme et de la nature. *Le Tour du Monde*, **26**: 177-208.
- Wallace, A. R.** 1889. *Darwinism; An Exposition of the Theory of Natural Selection With Some of Its Applications*. London & New York: Macmillan & Co.
- Wallace, A. R.** n.d. [1900?]. *Travels on the Amazon and Rio Negro, With an Account of the Native Tribes, and Observations on the Climate, Geology, and Natural History of the Amazon Valley*. London, New York & Melbourne: Ward, Lock & Co., Ltd.
- Wallace, A. R.** 1905. *My Life: A Record of Events and Opinions*. 2 Vols. London: Chapman and Hall, Ltd.
- Wallace, A. R.** 1908. *My Life: A Record of Events and Opinions*. London: Chapman and Hall, Ltd.
- Wallace, A. R.** 1913. *Social Environment and Moral Progress*. London, New York, Toronto & Melbourne: Cassell & Co., Ltd.
- Wallace, A. R.** 1913. *The Revolt of Democracy*. London, New York, Toronto & Melbourne: Cassell & Co., Ltd.
